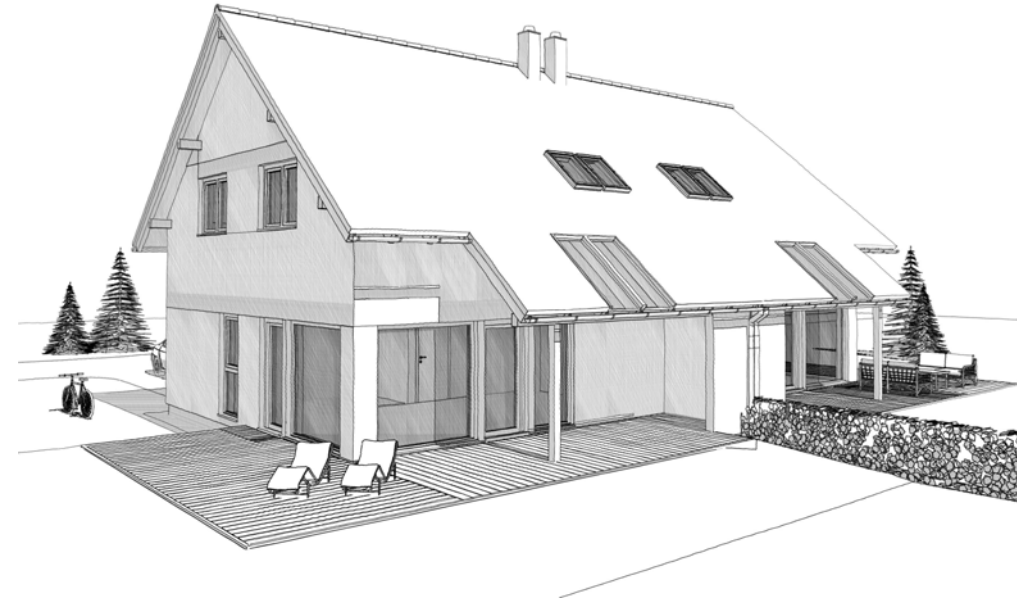
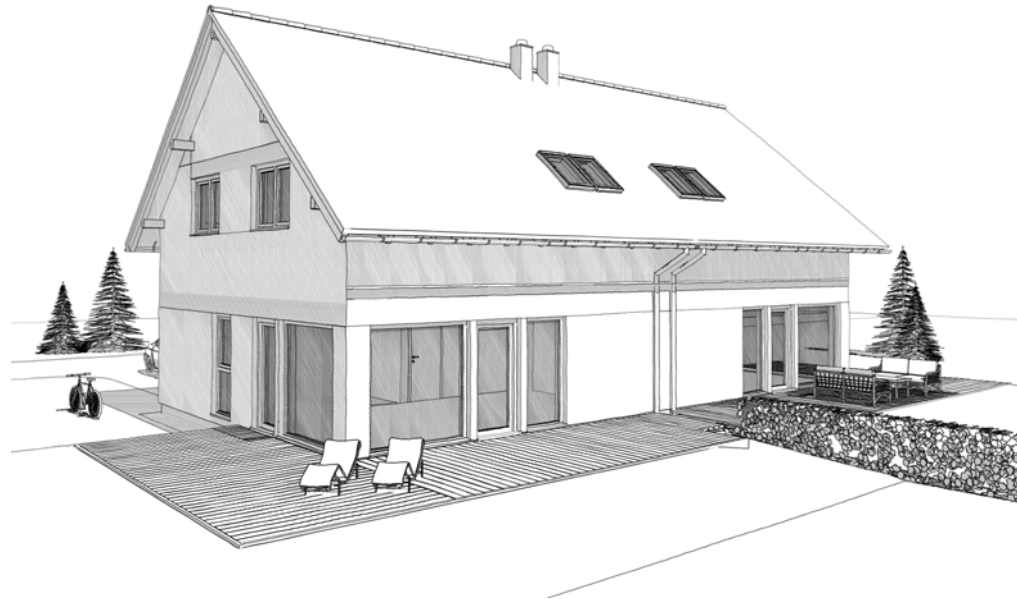


ELK DOPPELHAUS 120

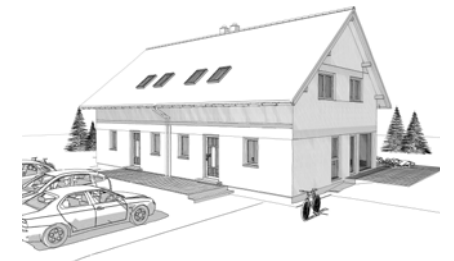
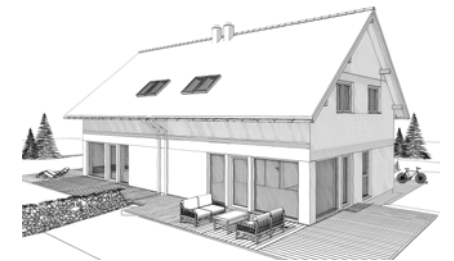
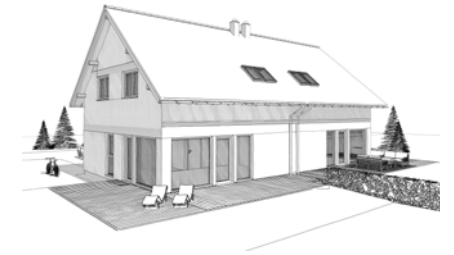
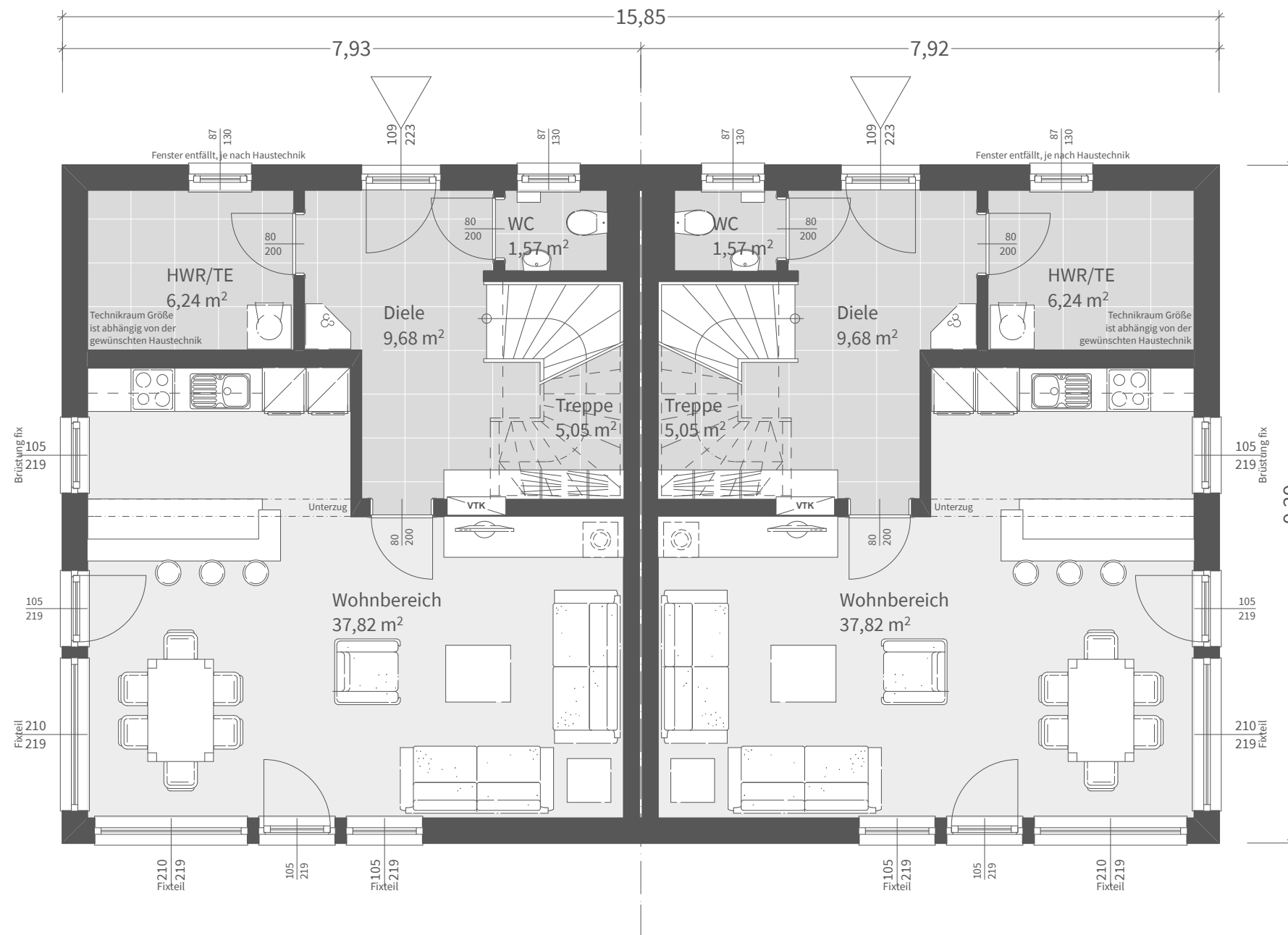
Ansichten - Satteldach 40°



Dachform	
Satteldach	40°, Kst. 1,30 m

Nettogrundrissfläche / DHH	
Erdgeschoß	60,36 m ²
Obergeschoß	59,74 m ²
Summe	120,10 m ²

Luftraum	0,00 m ²
Bebaute Fläche	147,25 m ²

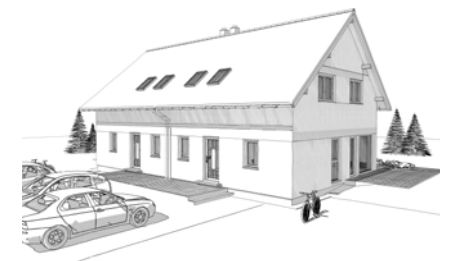
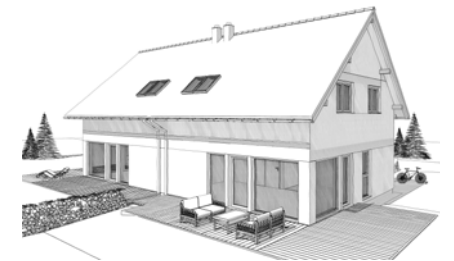
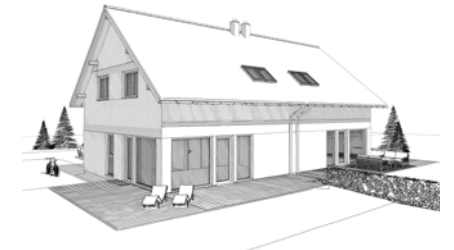
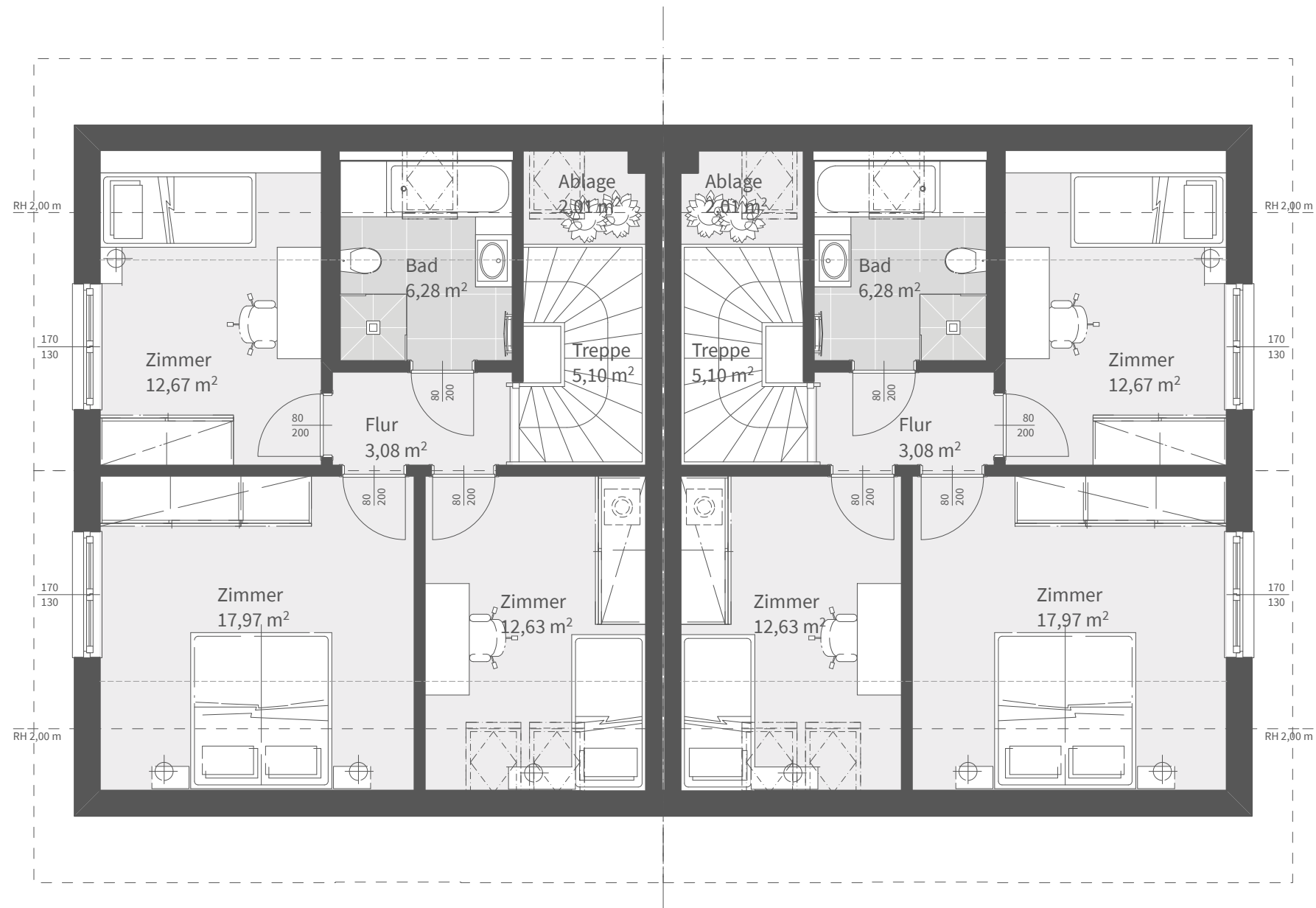


Dachform
Satteldach 40°, Kst. 1,30 m

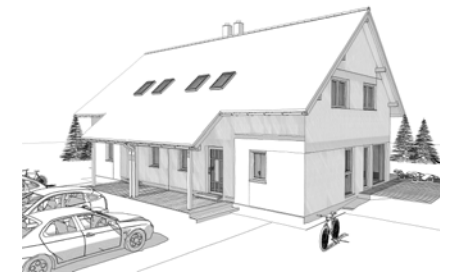
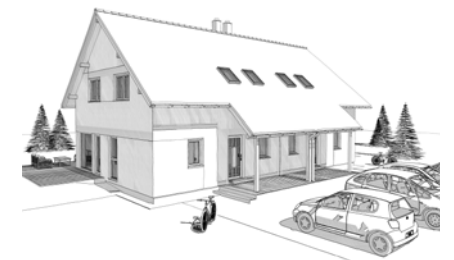
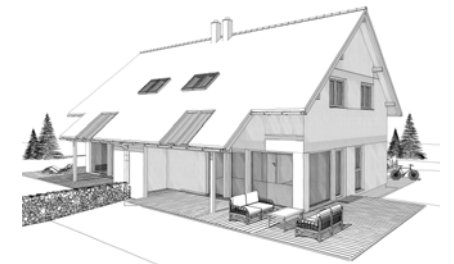
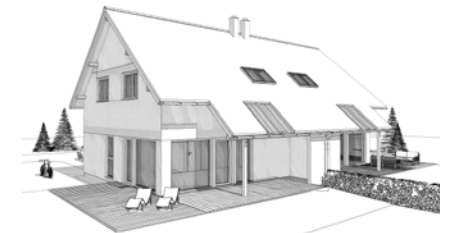
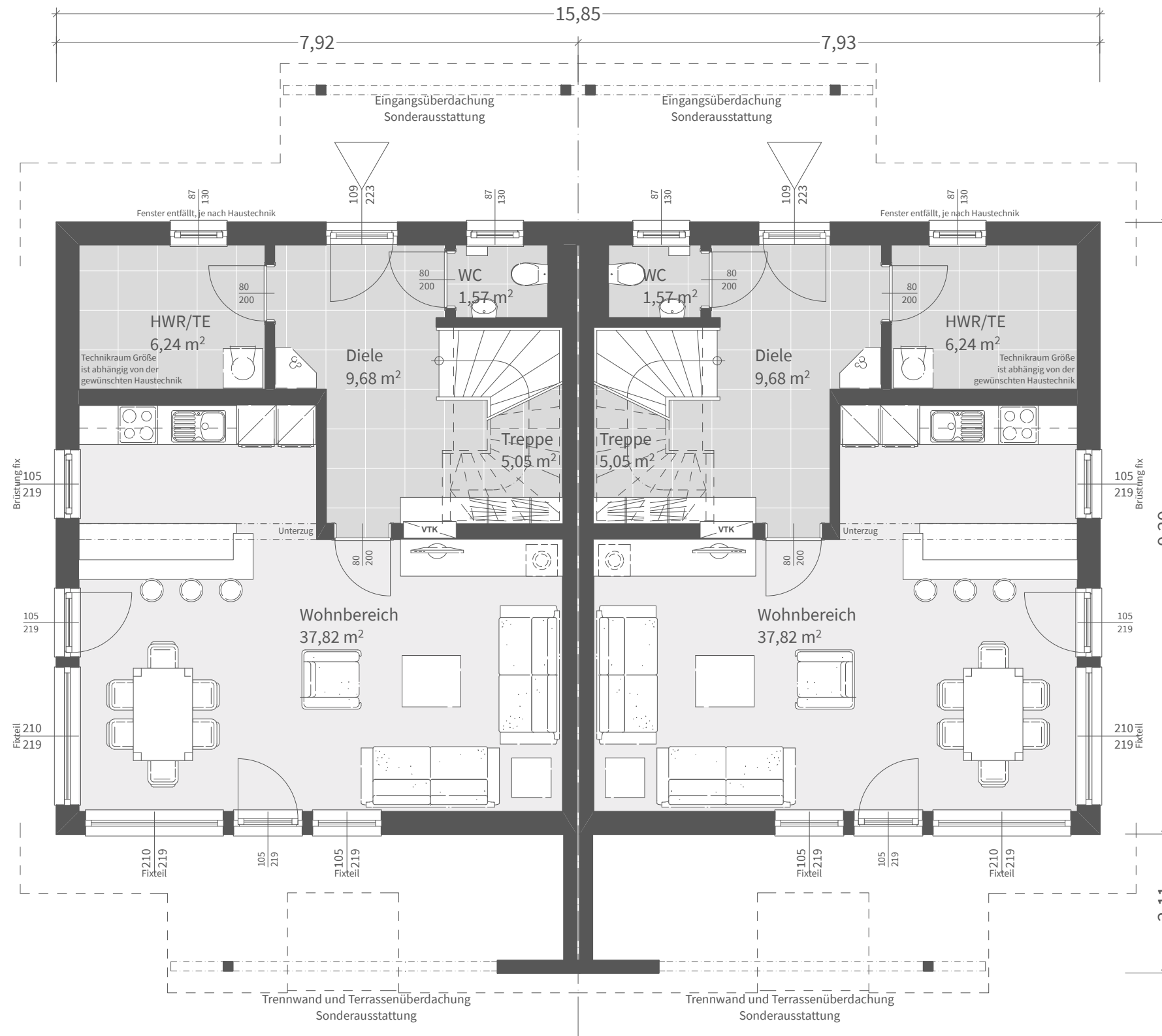
Nettogrundrissfläche / DHH	
Erdgeschoß	60,36 m ²
Obergeschoß	59,74 m ²
Summe	120,10 m²

Luftraum	0,00 m ²
Bebaute Fläche	147,25 m²





Dachform	
Satteldach	40°, Kst. 1,30 m
Gebäudehöhe	4,70 m
Traufenhöhe	3,86 m
Firsthöhe	8,59 m
<small>ab Oberkante Fundament - 18,5 cm FB-Aufbau</small>	
Nettogrundrissfläche / DHH	
Erdgeschoß	60,36 m ²
Obergeschoß	59,74 m ²
Summe	120,10 m ²
Luftraum	0,00 m ²
Bebaute Fläche	147,25 m ²



Dachform

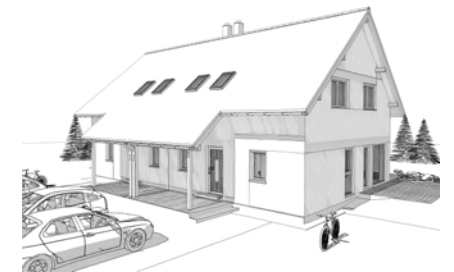
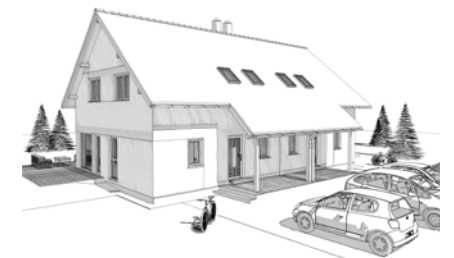
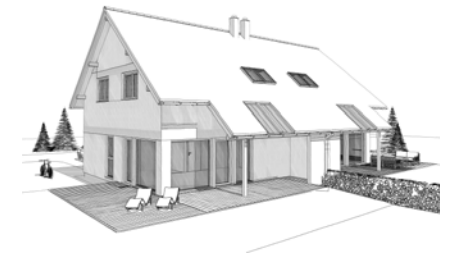
Satteldach 40°, Kst. 1,30 m mit Dachabschleppungen

Nettogrundrissfläche / DHH

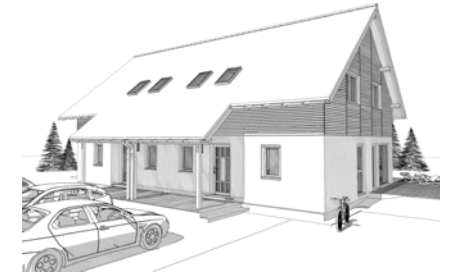
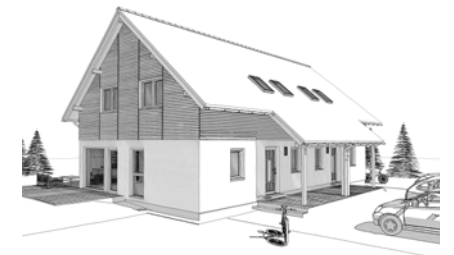
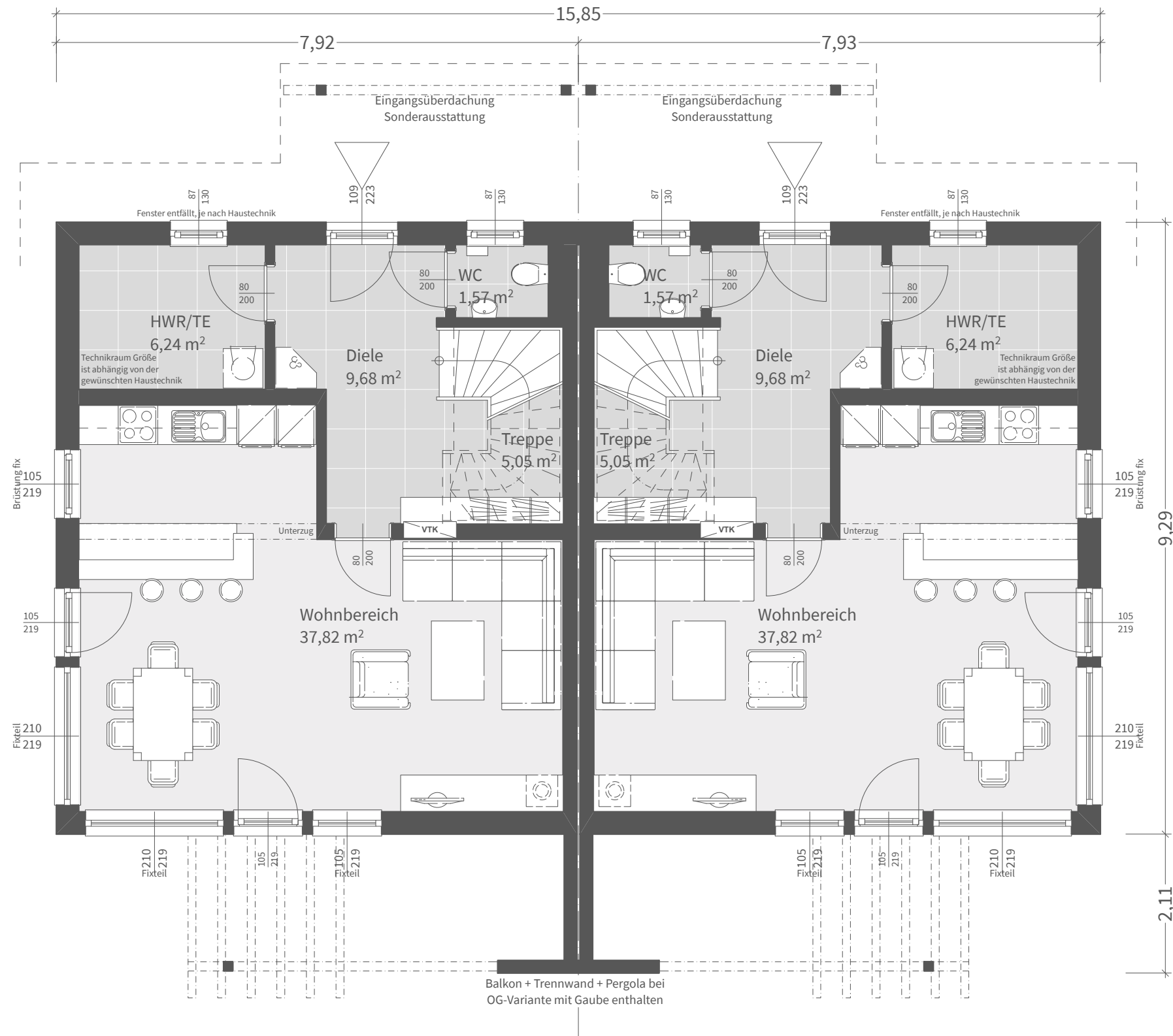
Erdgeschoß	60,36 m ²
Obergeschoß	59,74 m ²
Summe	120,10 m ²

Luftraum 0,00 m²

Bebaute Fläche 147,25 m²



Dachform	
Satteldach mit Dachabschleppungen	40°, Kst. 1,30 m
Gebäudehöhe	4,70 m
Traufenhöhe	3,86 m
Firsthöhe	8,59 m
<small>ab Oberkante Fundament - 18,5 cm FB-Aufbau</small>	
Nettogrundrissfläche / DHH	
Erdgeschoß	60,36 m ²
Obergeschoß	59,74 m ²
Summe	120,10 m²
Luftraum	0,00 m ²
Bebaute Fläche	147,25 m²



Dachform

Satteldach 40°, Kst. 1,30 m mit Dachabschleppungen

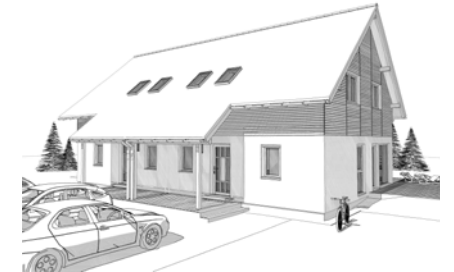
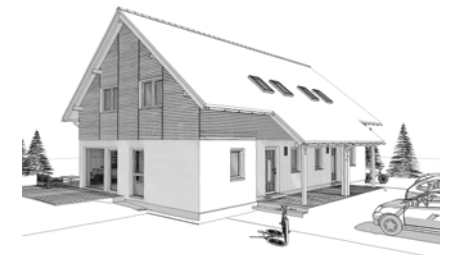
Nettogrundrissfläche / DHH

Erdgeschoß	60,36 m ²
Obergeschoß	59,57 m ²
Summe	119,93 m ²

Luftraum 0,00 m²

Bebaute Fläche 147,25 m²





Dachform

Satteldach	40°, Kst. 1,30 m
Gaube	30°, Vollgeschoß
Gebäudehöhe	4,70 m
Traufenhöhe	3,86 m
Firsthöhe	8,59 m

Nettogrundrissfläche / DHH

Erdgeschoß	60,36 m ²
Obergeschoß	59,57 m ²
Summe	119,93 m ²

Luftraum	0,00 m ²
Bebaute Fläche	147,25 m ²