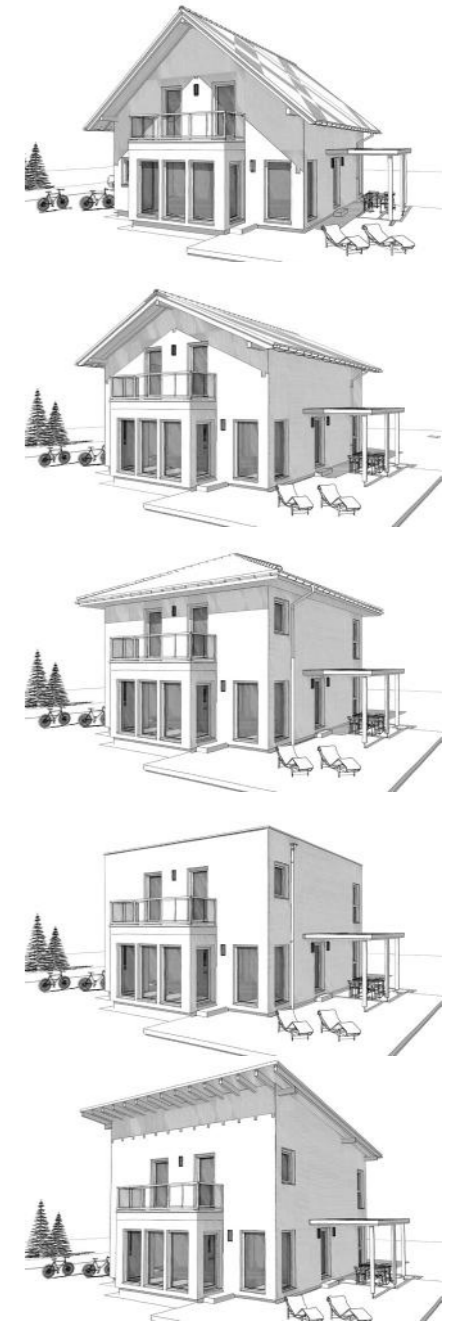
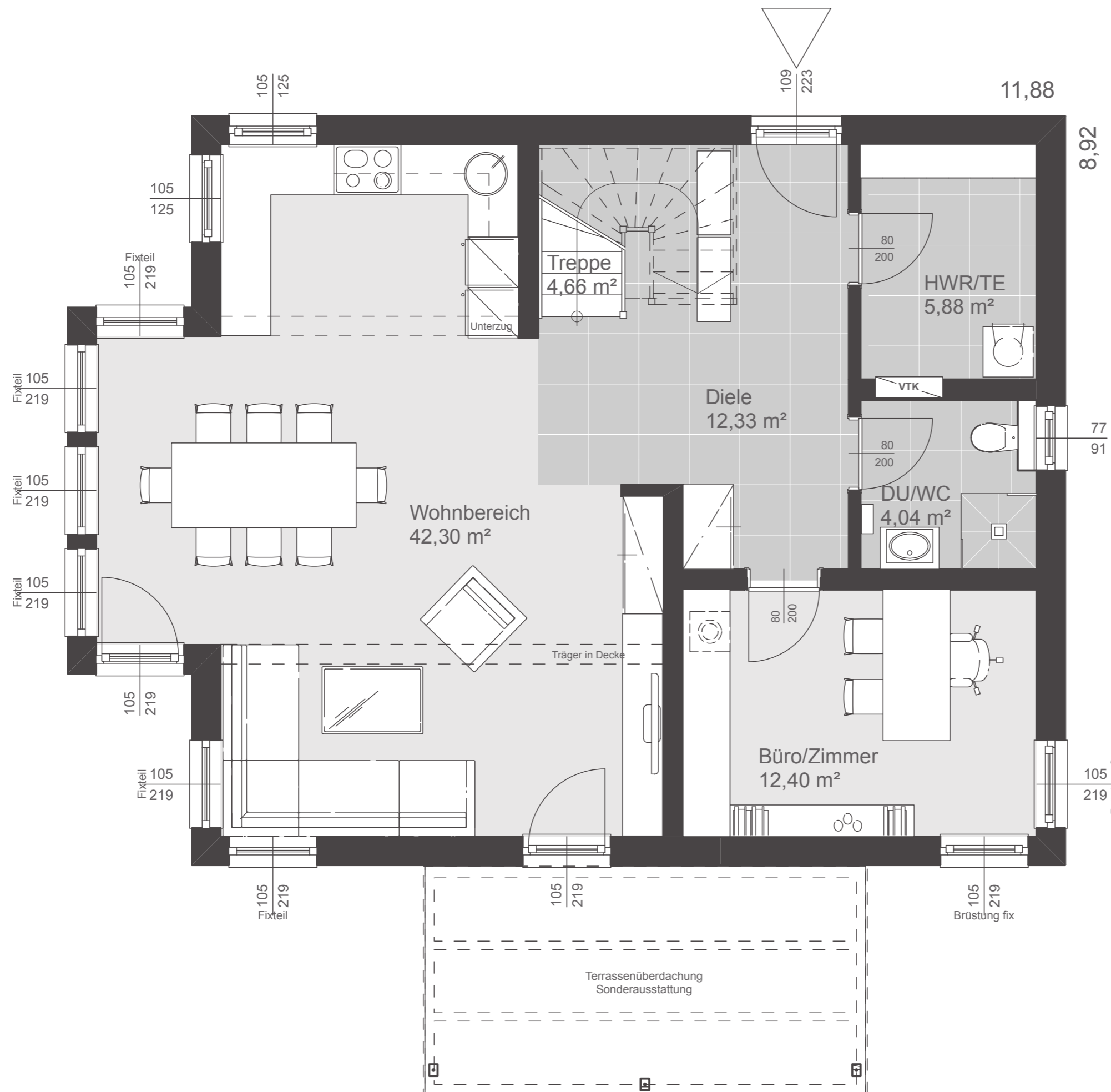


Dachformen

Satteldach	40° Kst. 1,00 m
Satteldach	25° Kst. 1,80 m
Walmdach	25°
Flachdach	3%
Pultdach	7°

Nettogrundfläche

Erdgeschoß	81,61 m ²
Obergeschoß	75,89 m ²
Summe	157,50 m²
Bebaute Fläche	99,23 m ²

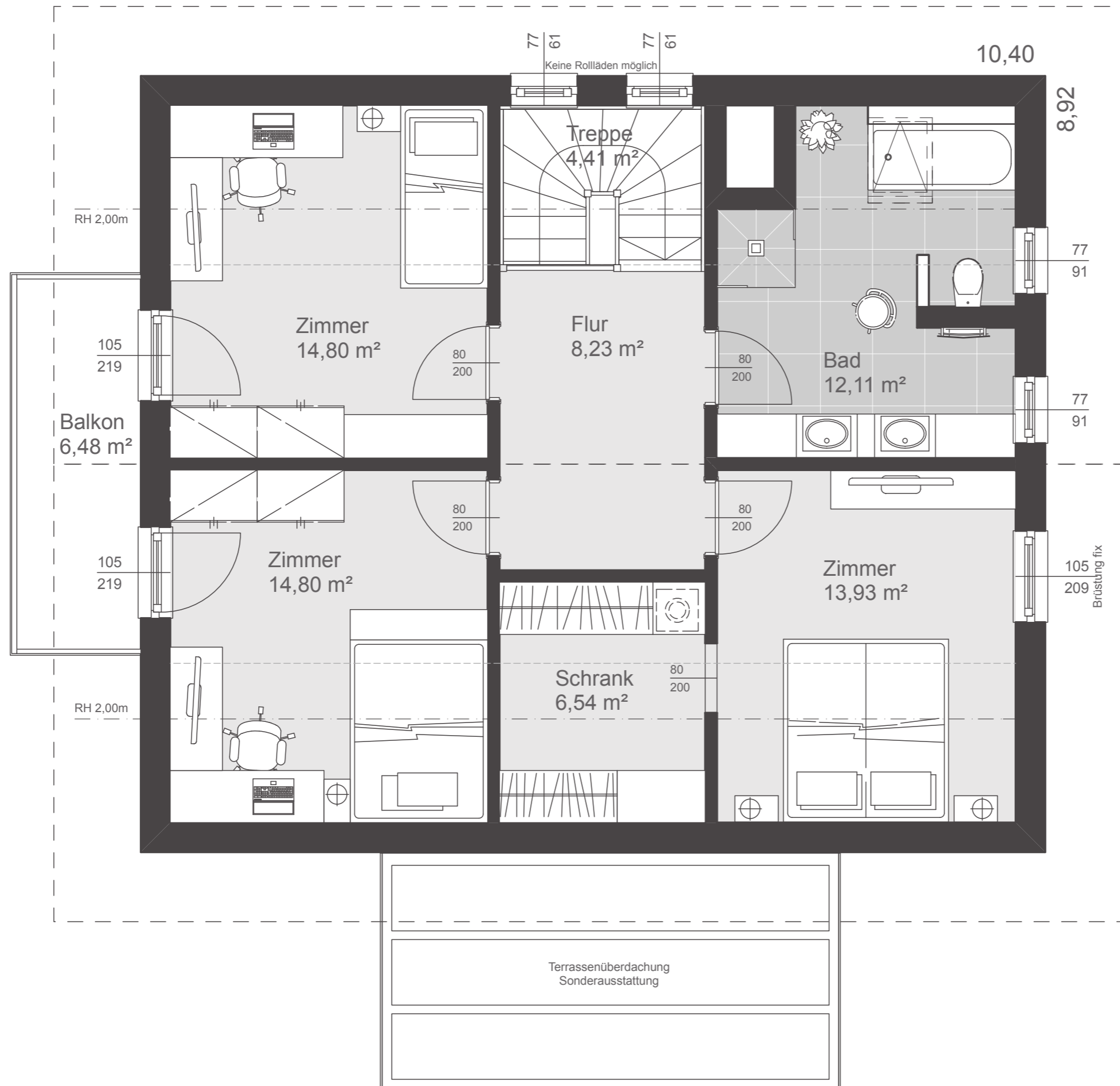


Dachformen

Satteldach	40° Kst. 1,00 m
Satteldach	25° Kst. 1,80 m
Walmdach	25°
Flachdach	3%
Pulldach	7°

Nettogrundfläche

Erdgeschoß	81,61 m ²
Obergeschoß	75,89 m ²
Summe	157,50 m²
Bebaute Fläche	99,23 m ²



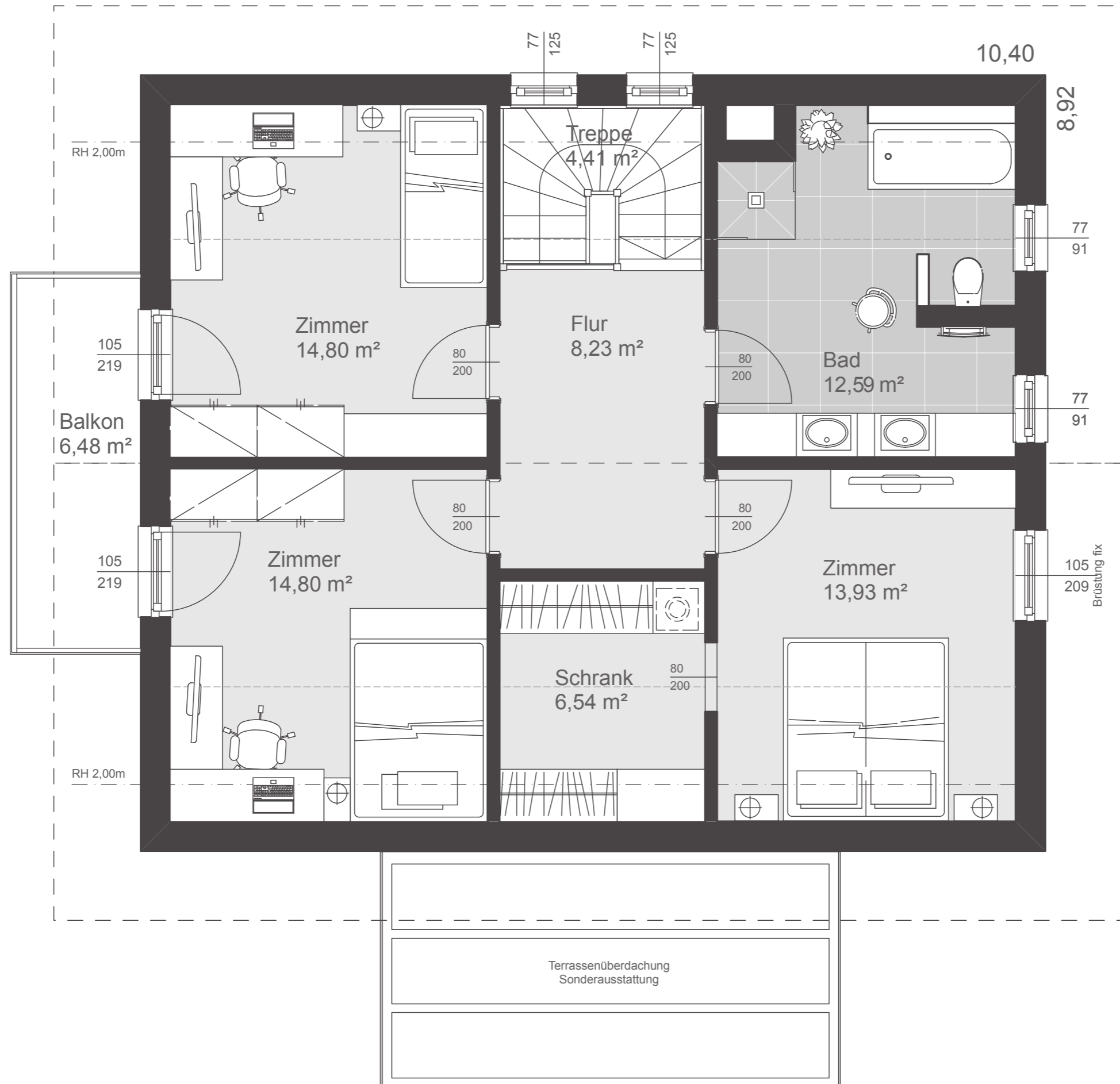
Dachform

Satteldach 40° Kst. 1,00 m

Nettogrundfläche

Erdgeschoß 81,61 m²
 Obergeschoß 74,82 m²

Summe 156,43 m²
 Bebaute Fläche 99,23 m²



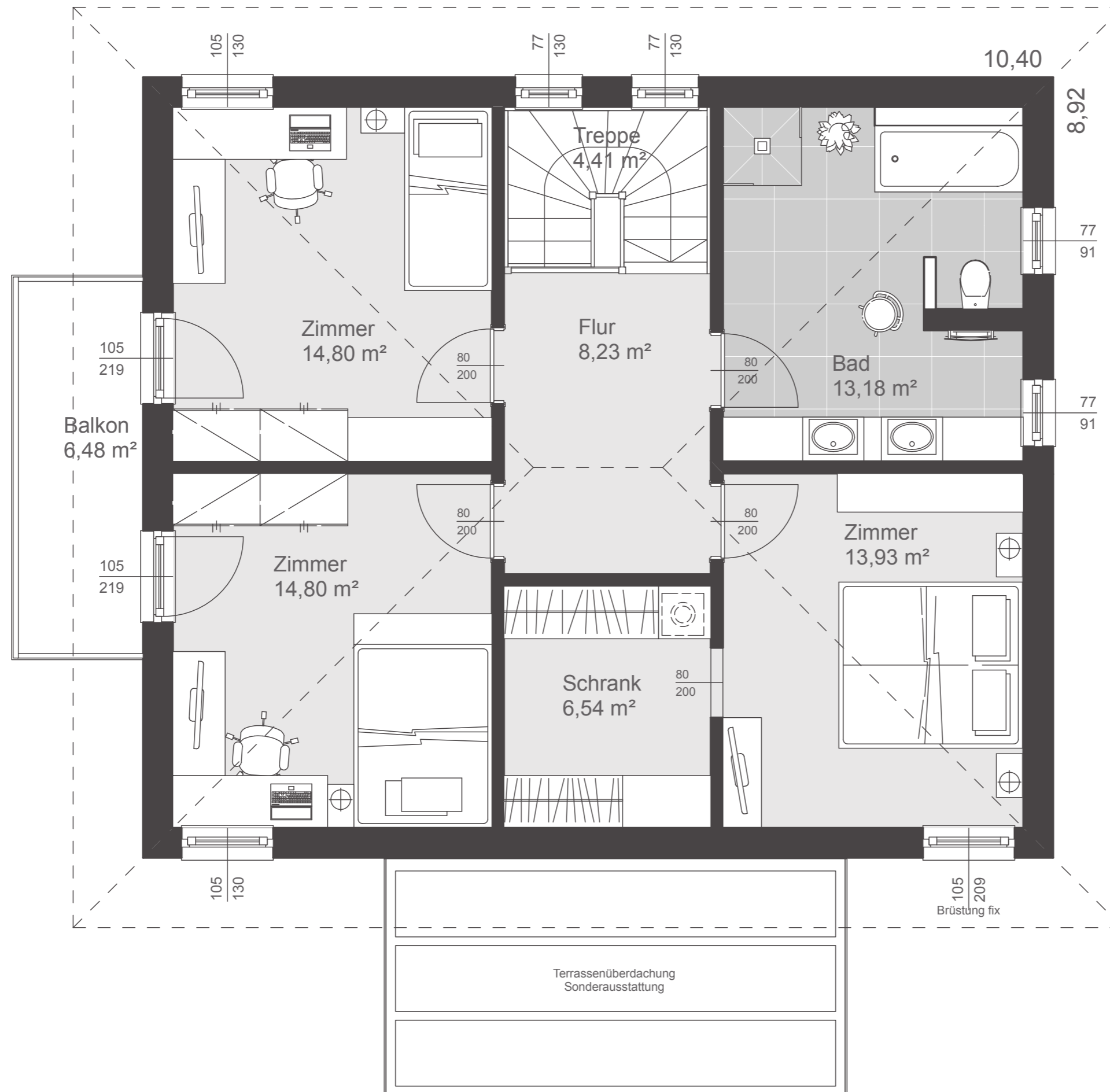
Dachform

Satteldach 25° Kst. 1,80 m

Nettogrundfläche

Erdgeschoß 81,61 m²
 Obergeschoß 75,30 m²

Summe 156,91 m²
 Bebaute Fläche 99,23 m²

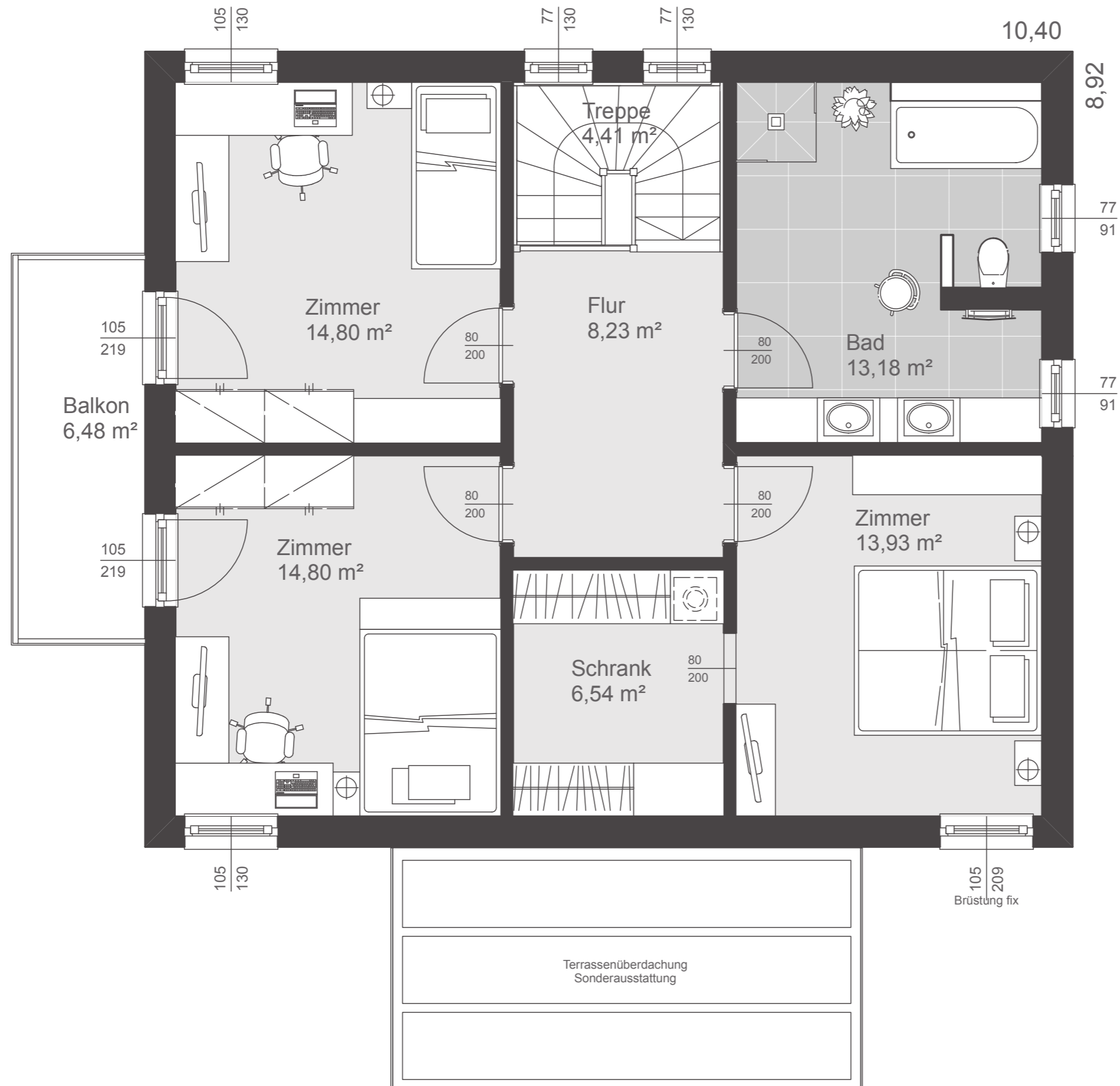


Dachform

Walmdach 25°

Nettogrundfläche

Erdgeschoß	81,61 m ²
Obergeschoß	75,89 m ²
Summe	157,50 m²
Bebaute Fläche	99,23 m ²

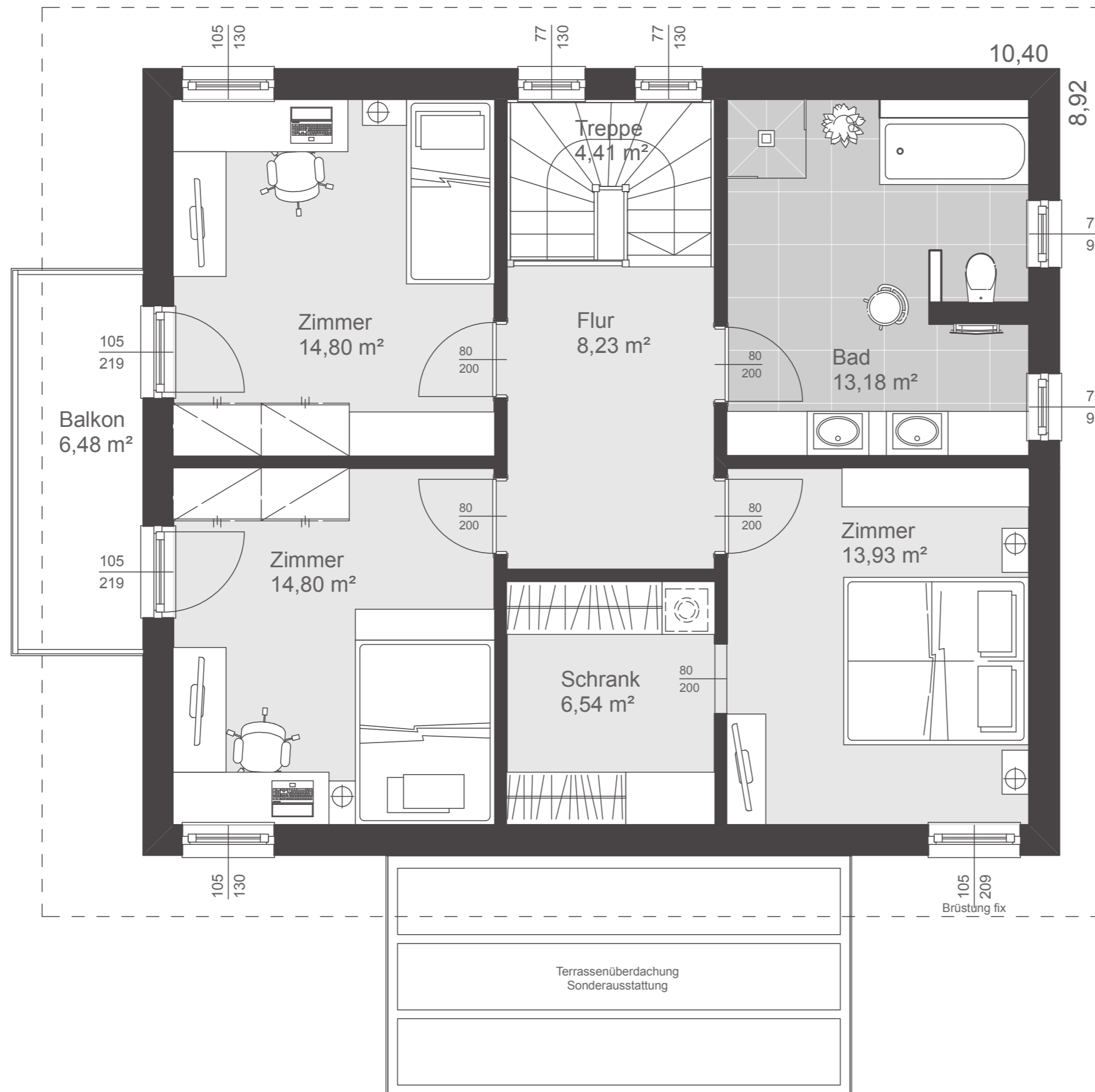


Dachform

Flachdach 3%

Nettogrundfläche

Erdgeschoß	81,61 m ²
Obergeschoß	75,89 m ²
Summe	157,50 m²
Bebaute Fläche	99,23 m ²



Dachform

Pultdach 7°

Nettogrundfläche

Erdgeschoß	81,61 m²
Obergeschoß	75,89 m²
Summe	157,50 m²
Bebaute Fläche	99,23 m²