

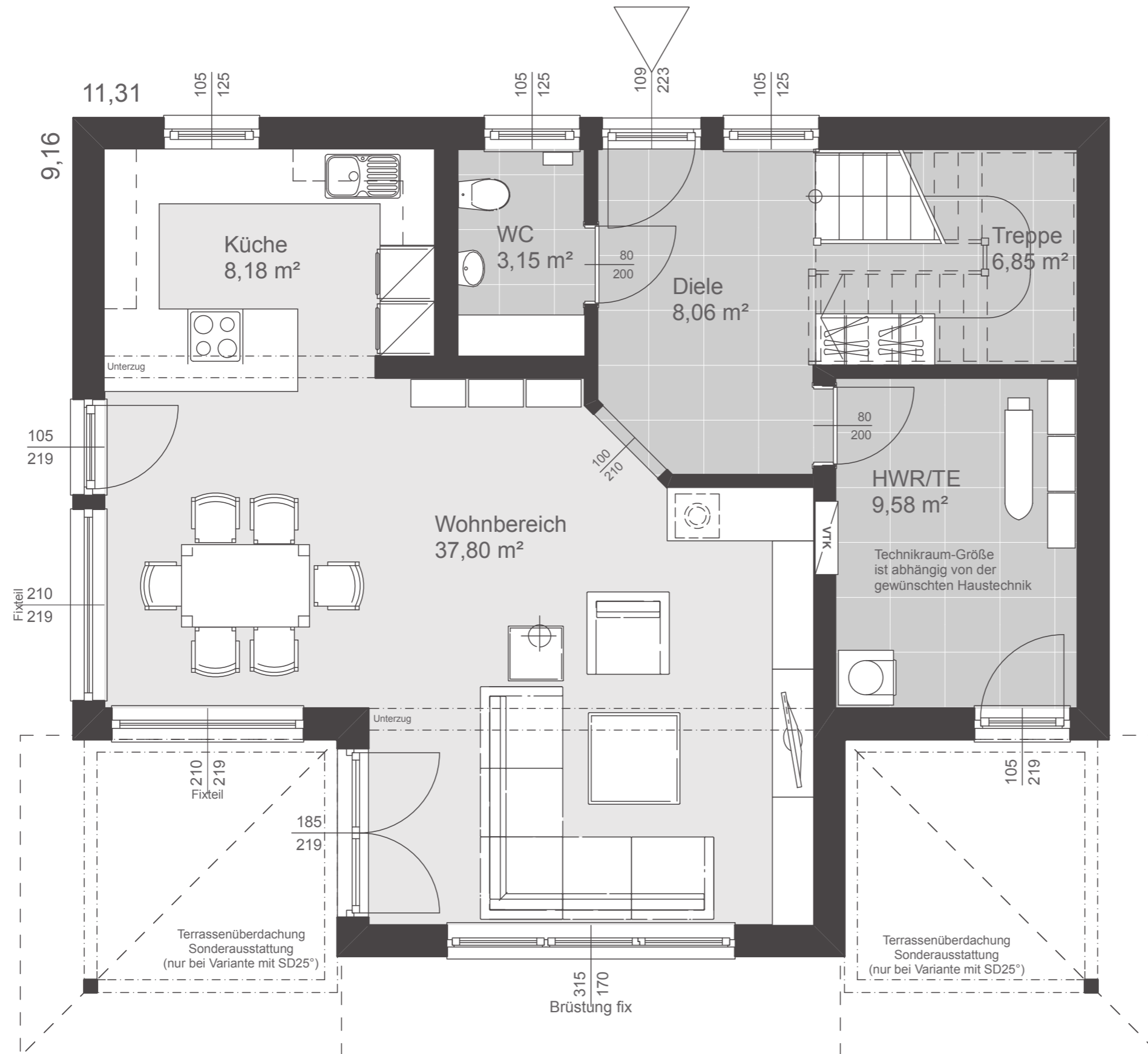
Dachformen

Satteldach	38° Kst. 1,40 m
Satteldach	30° Kst. 1,80 m

Nettogrundfläche

Erdgeschoß	73,62 m ²
Obergeschoß	72,68 m ²

Summe	146,30 m²
Bebaute Fläche	89,94 m ²

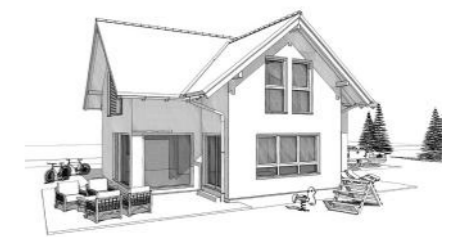
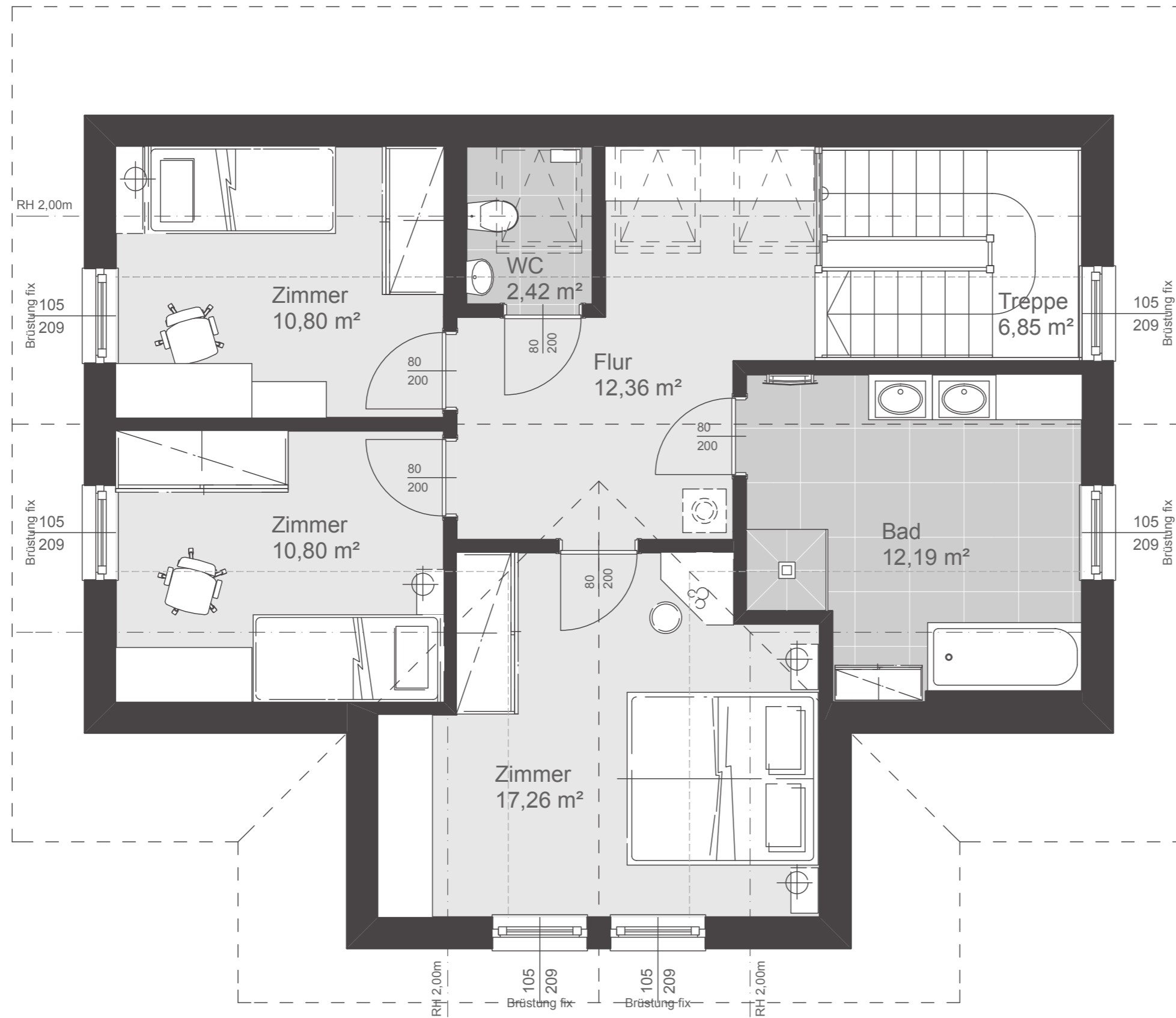


Dachformen

Satteldach	38° Kst. 1,40 m
Satteldach	25° Kst. 2,20 m

Nettogrundfläche

Erdgeschoß	73,62 m ²
Obergeschoß	72,68 m ²
Summe	146,30 m²
Bebaute Fläche	89,94 m ²



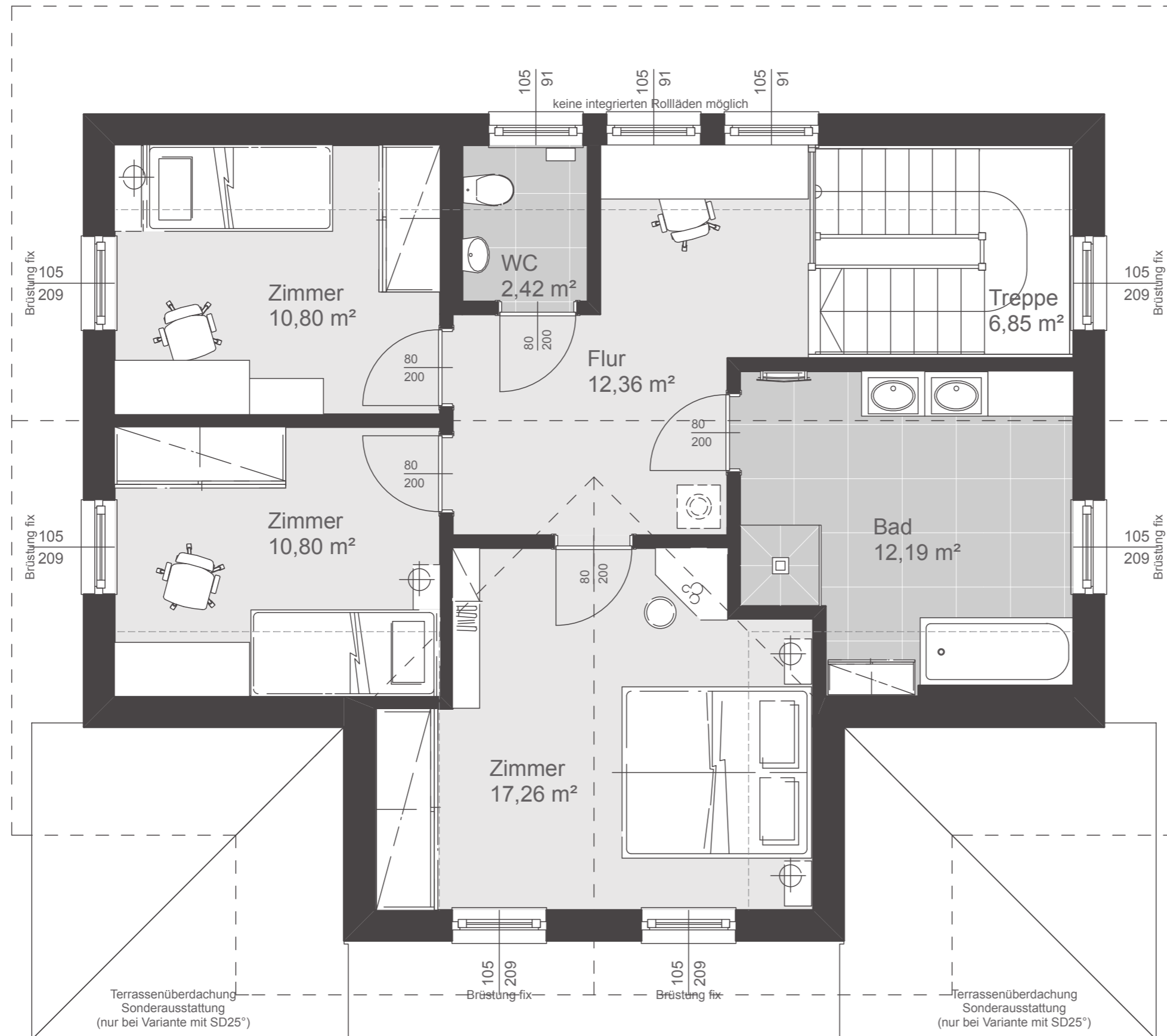
Dachform

Satteldach 38° Kst. 1,40 m

Nettogrundfläche

Erdgeschoß 73,62 m²
 Obergeschoß 72,68 m²

Summe 146,30 m²
 Bebaute Fläche 89,94 m²



Dachform

Satteldach 25° Kst. 2,20 m

Nettogrundfläche

Erdgeschoß 73,62 m²

Obergeschoß 72,68 m²

Summe 146,30 m²

Bebaute Fläche 89,94 m²