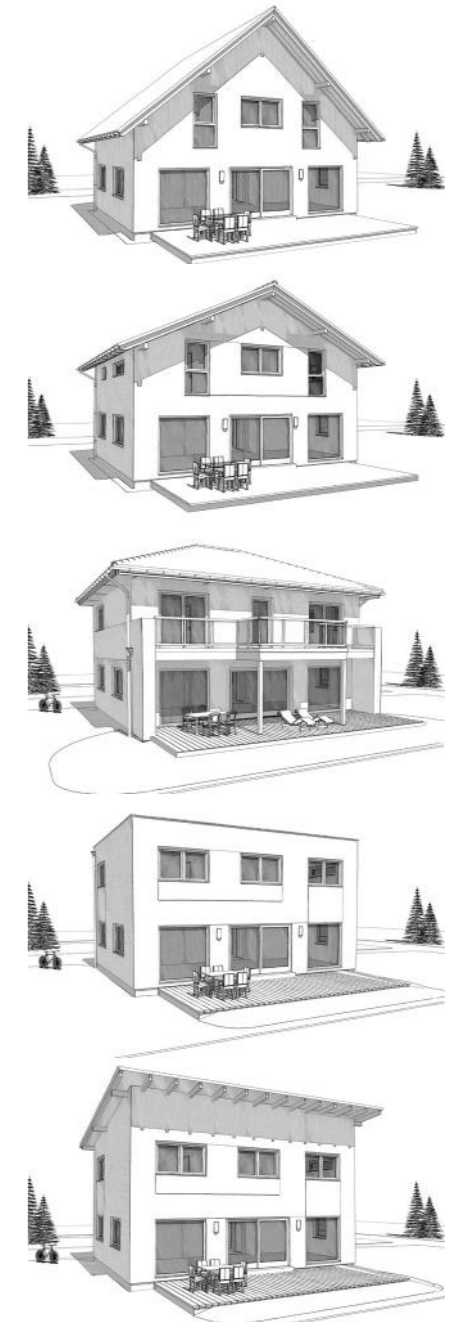
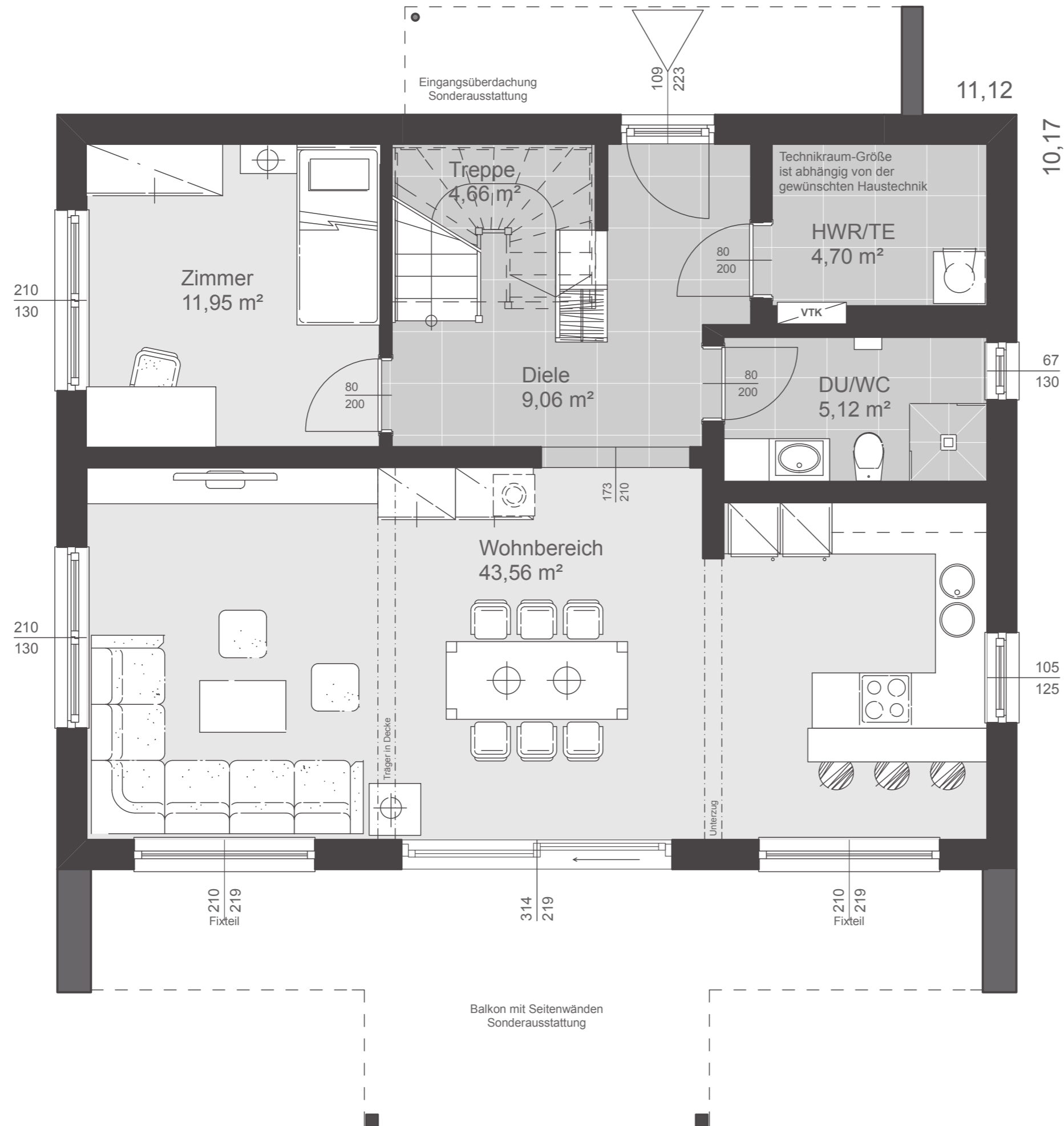


Dachformen

Satteldach	40° Kst. 1,00 m
Satteldach	25° Kst. 1,80 m
Walmdach	25°
Flachdach	3%
Pultdach	7°

Nettogrundfläche

Erdgeschoß	79,05 m ²
Obergeschoß	79,10 m ²
Summe	158,15 m²
Bebaute Fläche	97,15 m ²

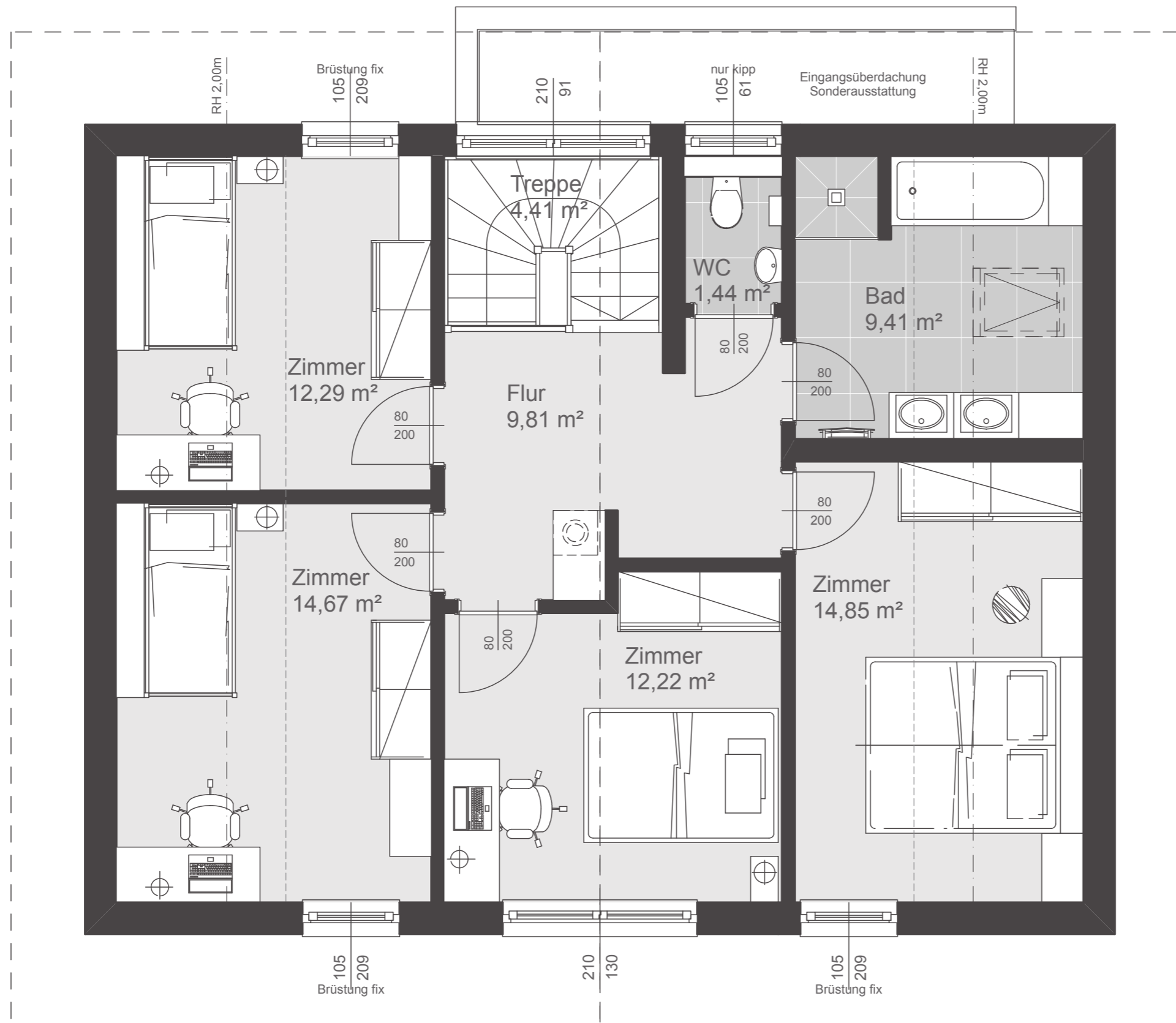


Dachformen

Satteldach	40° Kst. 1,00 m
Satteldach	25° Kst. 1,80 m
Walmdach	25°
Flachdach	3%
Pulldach	7°

Nettogrundfläche

Erdgeschoß	79,05 m ²
Obergeschoß	79,10 m ²
Summe	158,15 m²
Bebaute Fläche	97,15 m ²

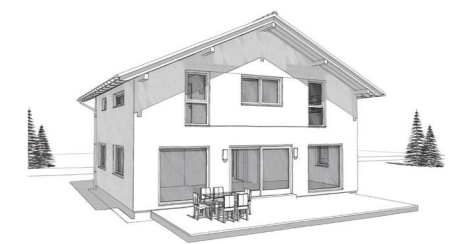
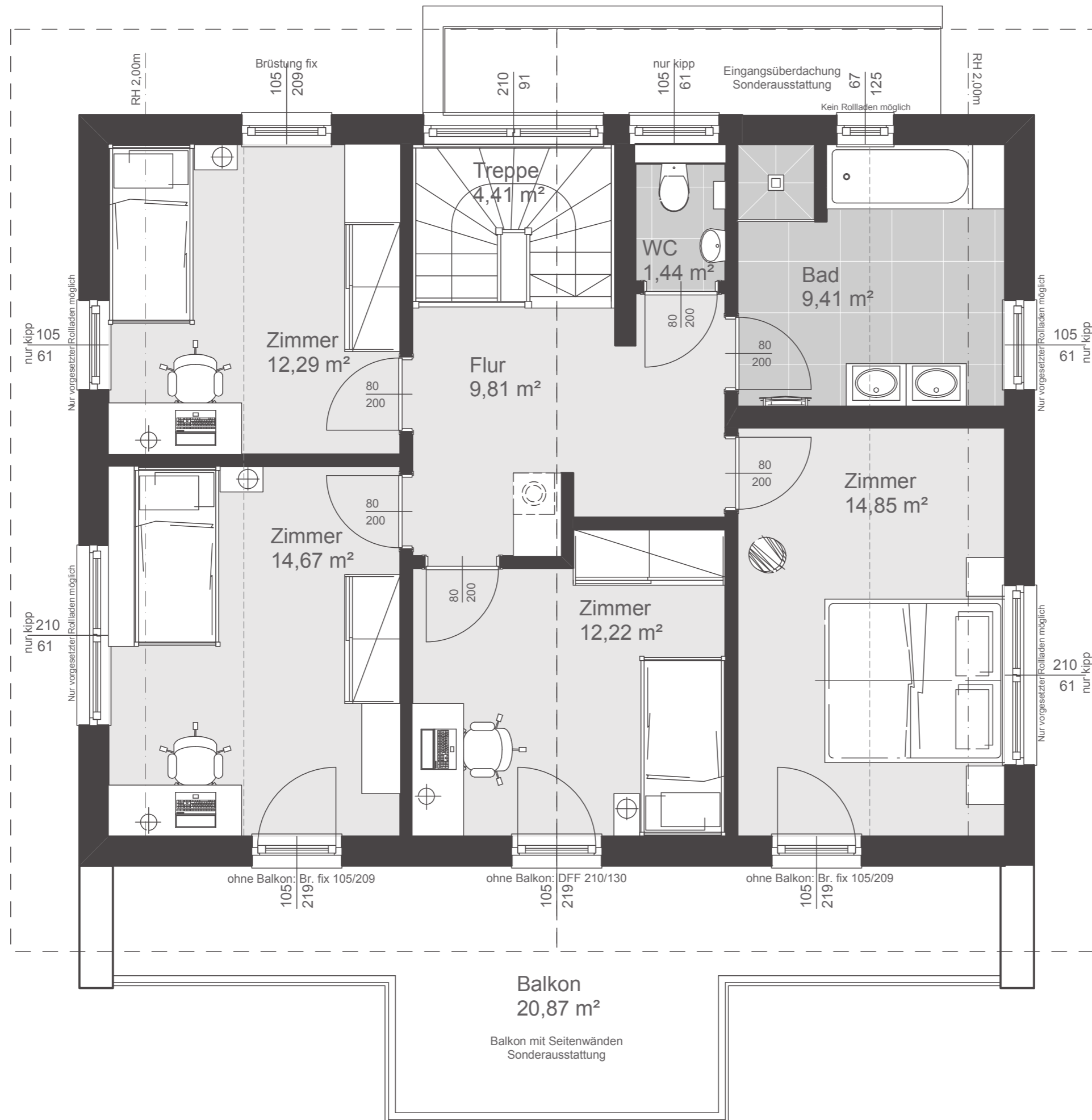


Dachform

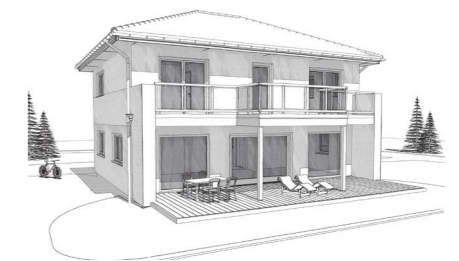
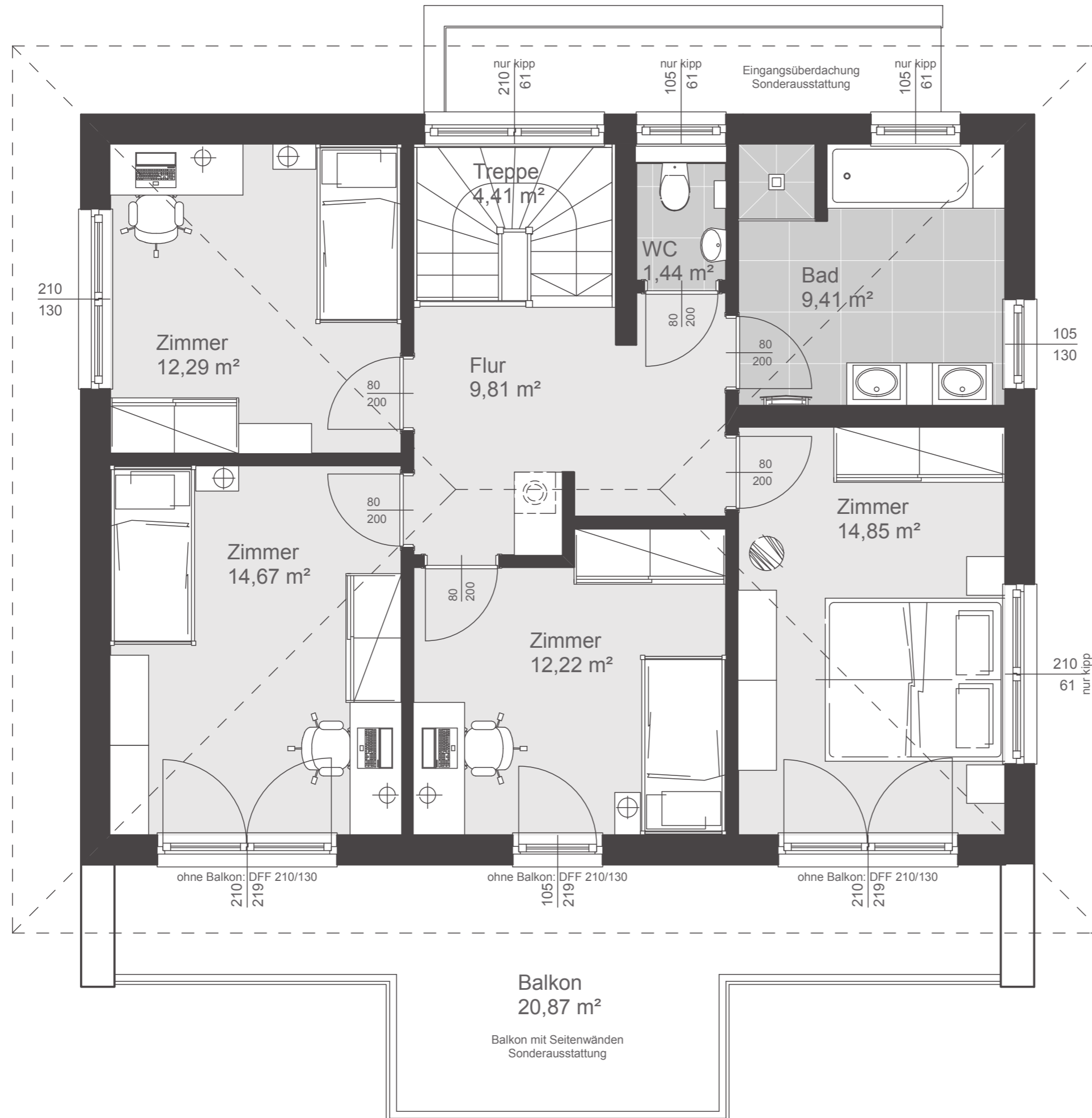
Satteldach 40° Kst. 1,00 m 7°

Nettogrundfläche

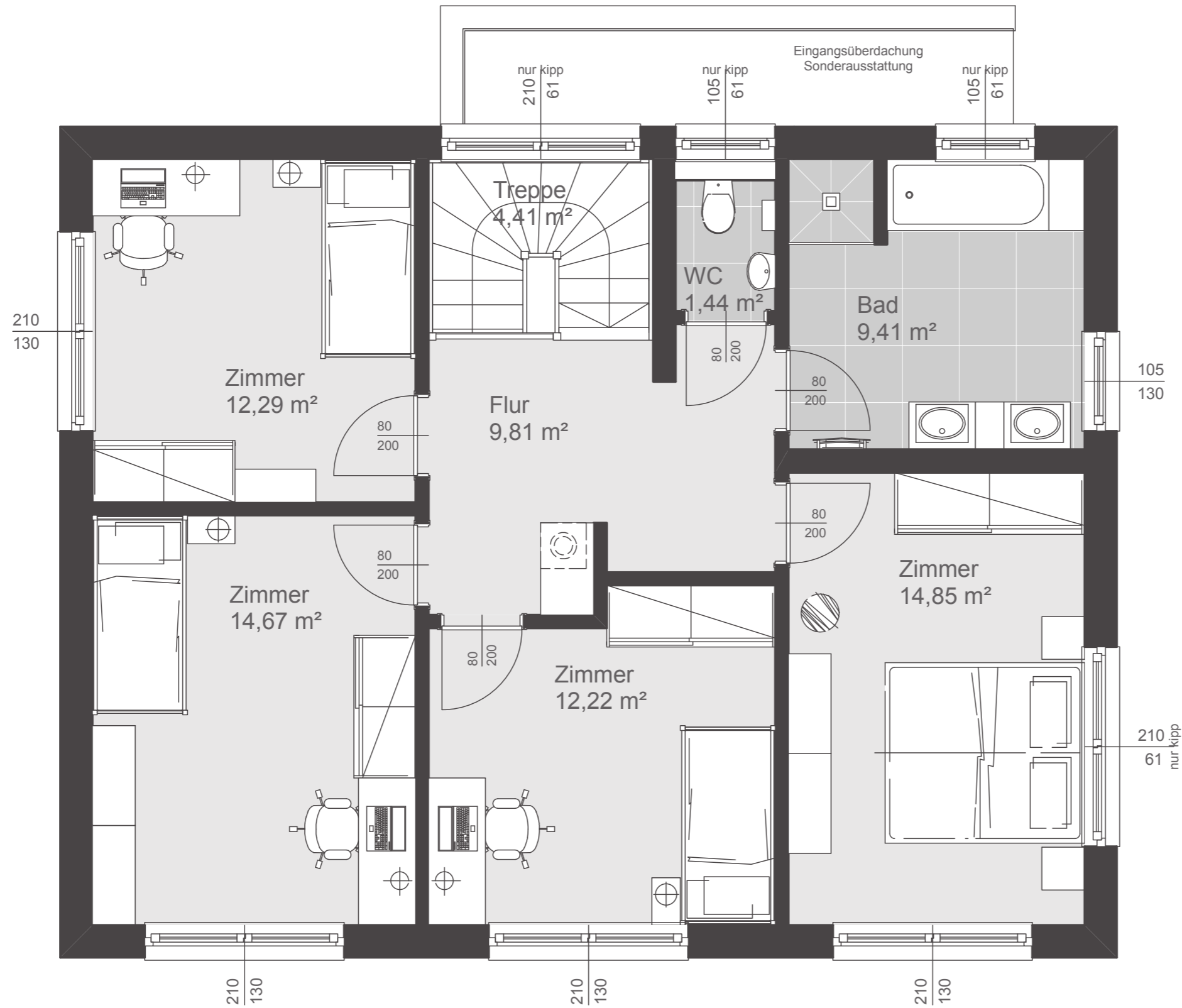
Erdgeschoß	79,05 m ²
Obergeschoß	79,10 m ²
Summe	158,15 m²
Bebaute Fläche	97,15 m ²



Dachform	
Satteldach	25° Kst. 1,80 m
Nettogrundfläche	
Erdgeschoß	79,05 m ²
Obergeschoß	79,10 m ²
Summe	158,15 m²
Bebaute Fläche	97,15 m ²



Dachform	
Walmdach	25°
Nettogrundfläche	
Erdgeschoß	79,05 m ²
Obergeschoß	79,10 m ²
Summe	158,15 m²
Bebaute Fläche	97,15 m ²

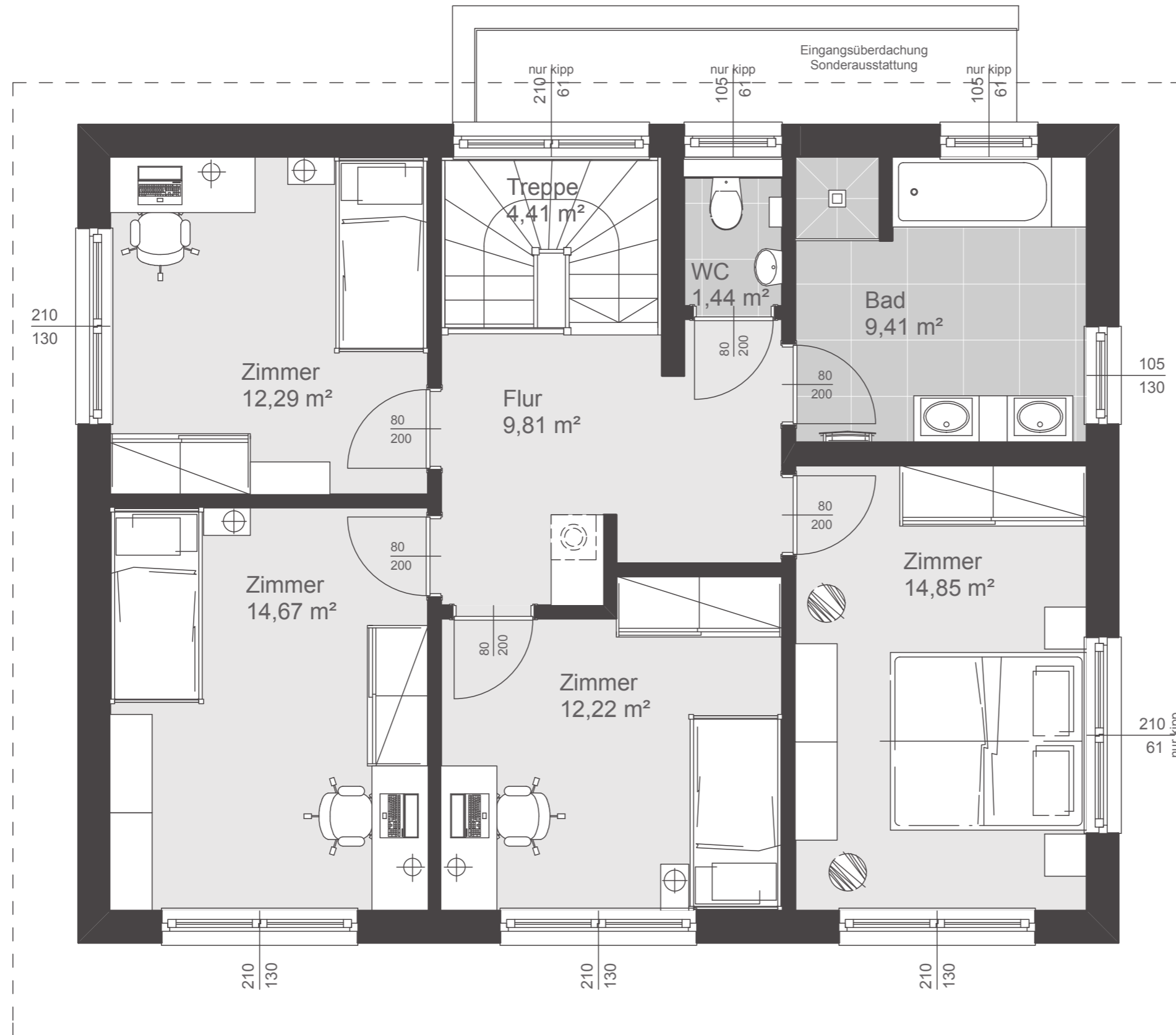


Dachform

Flachdach 3%

Nettogrundfläche

Erdgeschoß	79,05 m ²
Obergeschoß	79,10 m ²
Summe	158,15 m²
Bebaute Fläche	97,15 m ²



Dachform

Pultdach 7°

Nettogrundfläche

Erdgeschoß	79,05 m ²
Obergeschoß	79,10 m ²
Summe	158,15 m²
Bebaute Fläche	97,15 m ²