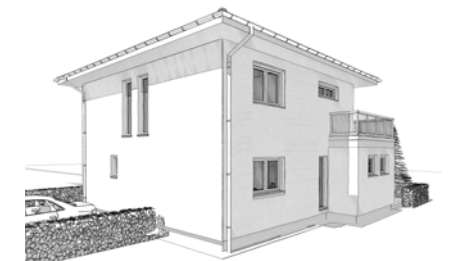
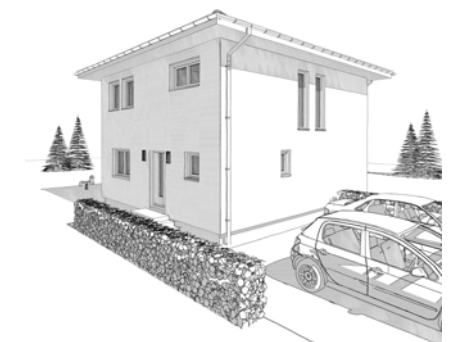
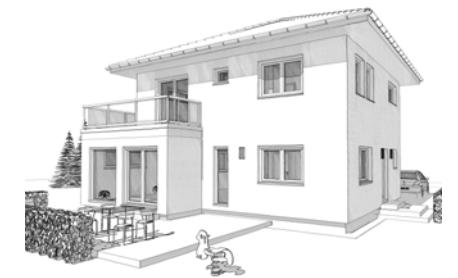
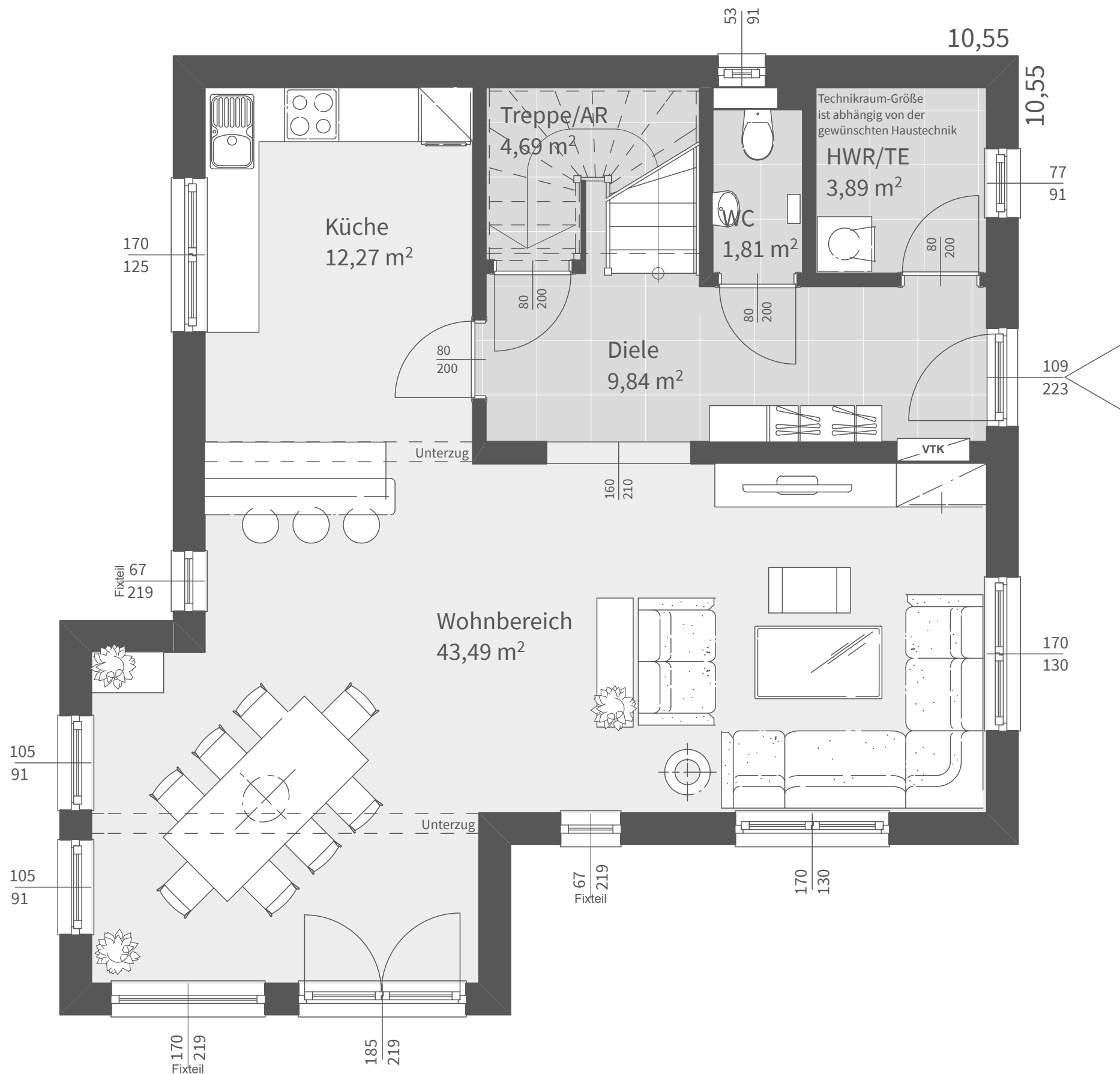


Dachform
Walmdach 25°, Vollgeschoss

Nettogrundrissfläche
Erdgeschoß 75,99 m²
Obergeschoß 64,81 m²
Summe 140,80 m²

Luftraum 0,00 m²
Bebaute Fläche 93,04 m²



Dachform

Walmdach

25°, Vollgeschoss

Nettogrundrissfläche

Erdgeschoß 75,99 m²

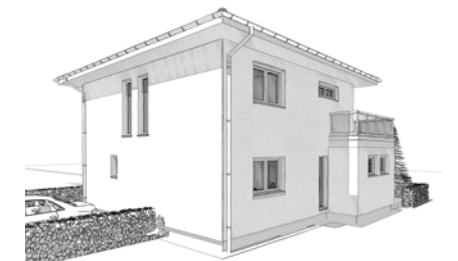
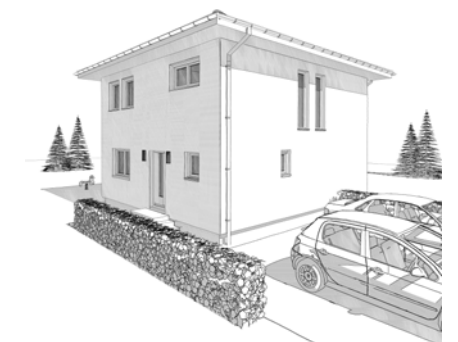
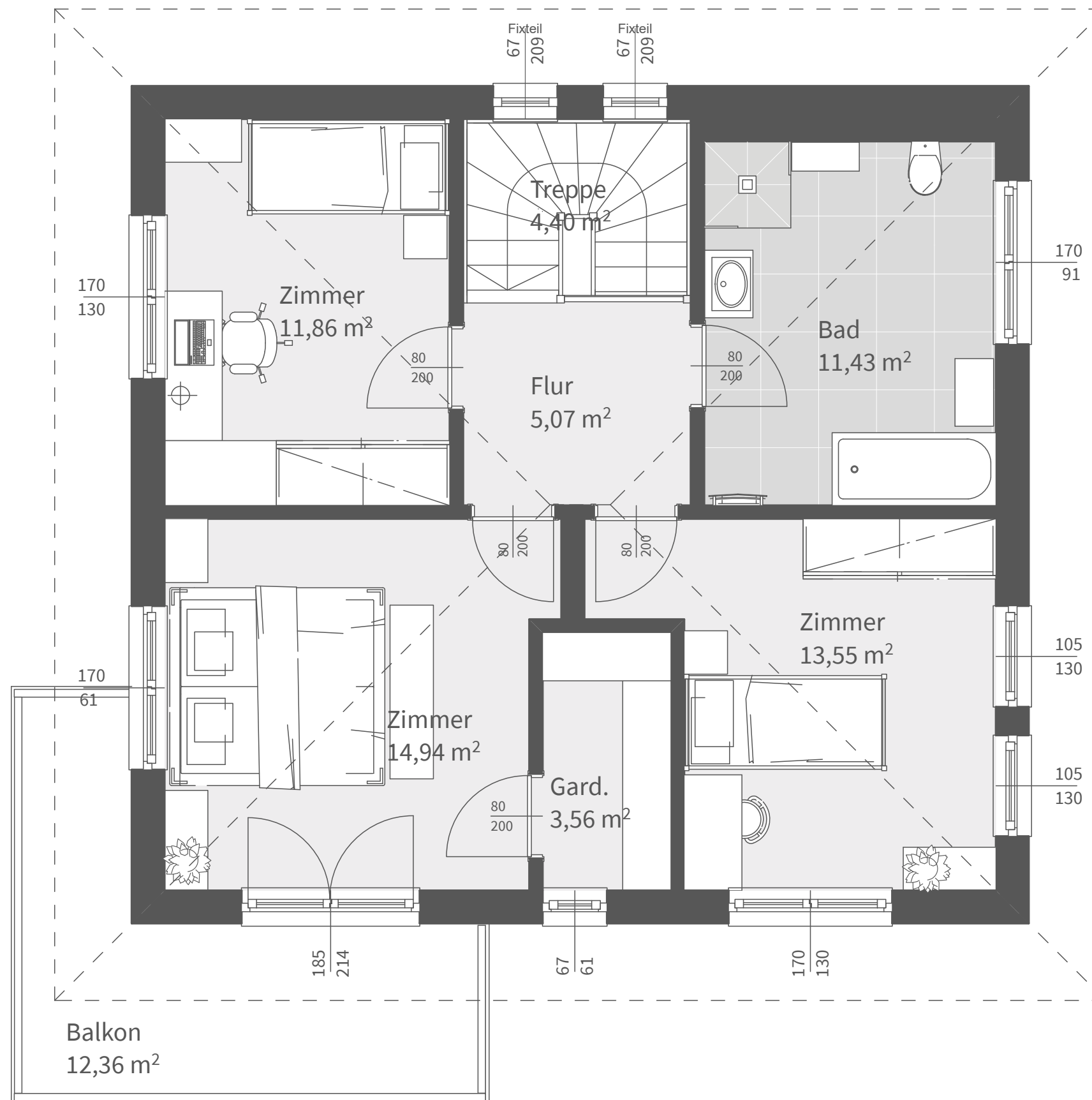
Obergeschoß 64,81 m²

Summe 140,80 m²

Luftraum 0,00 m²

Bebaute Fläche 93,04 m²





Dachform

Walmdach	25°, Vollgeschoss
Gebäudehöhe	6,38 m
Traufenhöhe	5,89 m
Firsthöhe	8,40 m
ab Oberkante Fundament - 18,5cm FB-Aufbau	

Nettogrundrissfläche	
Erdgeschoß	75,99 m ²
Obergeschoß	64,81 m ²
Summe	140,80 m ²

Luftraum	0,00 m ²
Bebaute Fläche	93,04 m ²