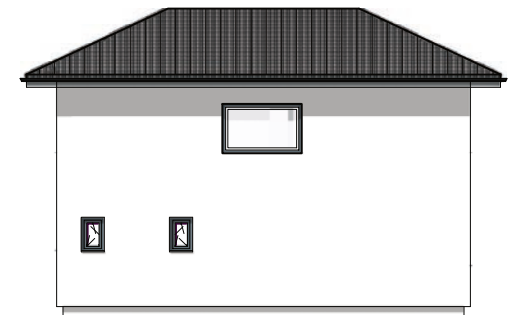
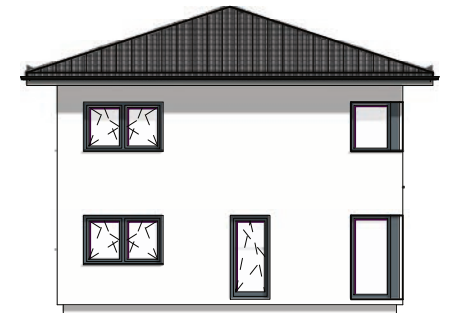
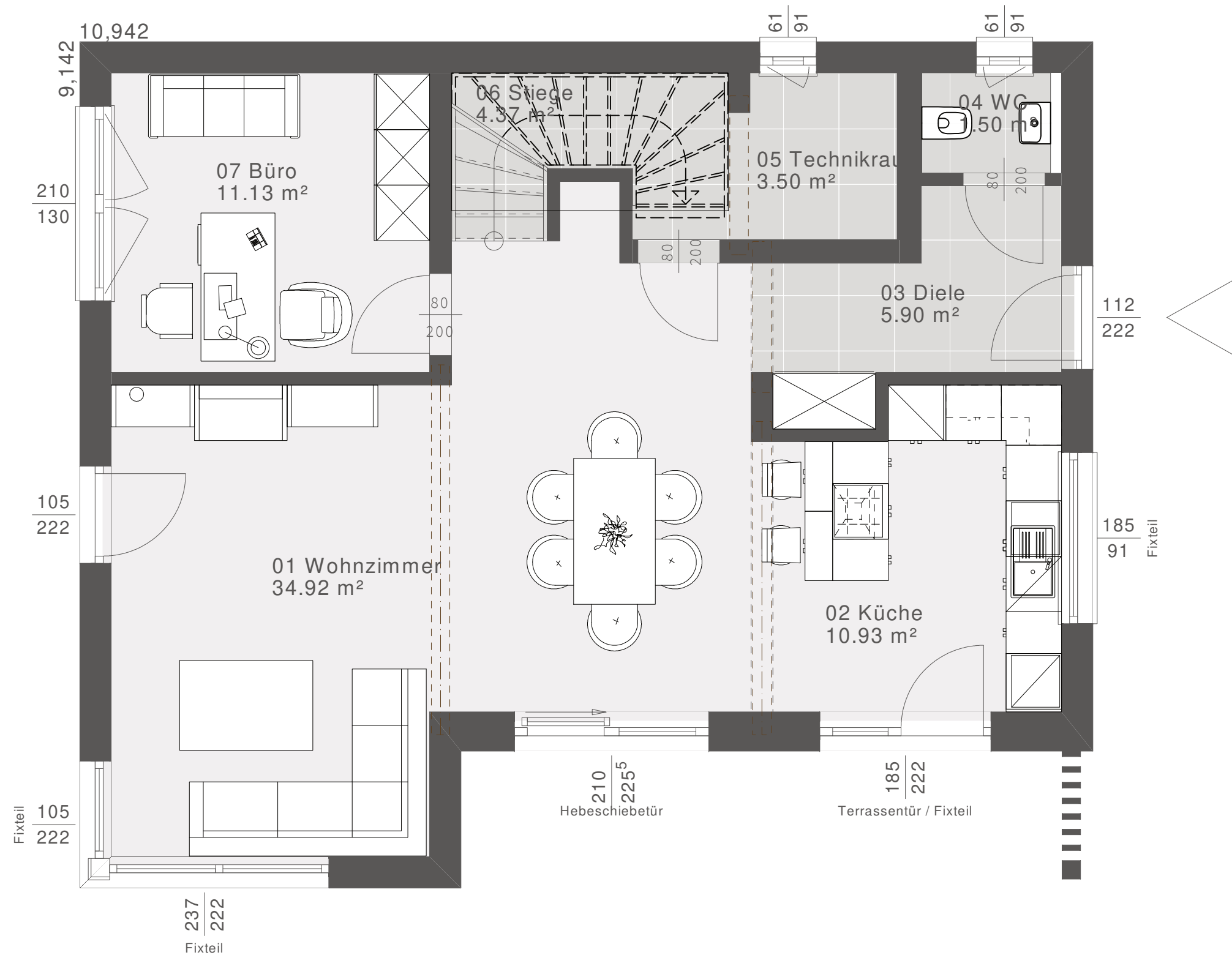


# ELK Design 144 - Musterhaus Haid



# ELK Design 144 - Musterhaus Haid

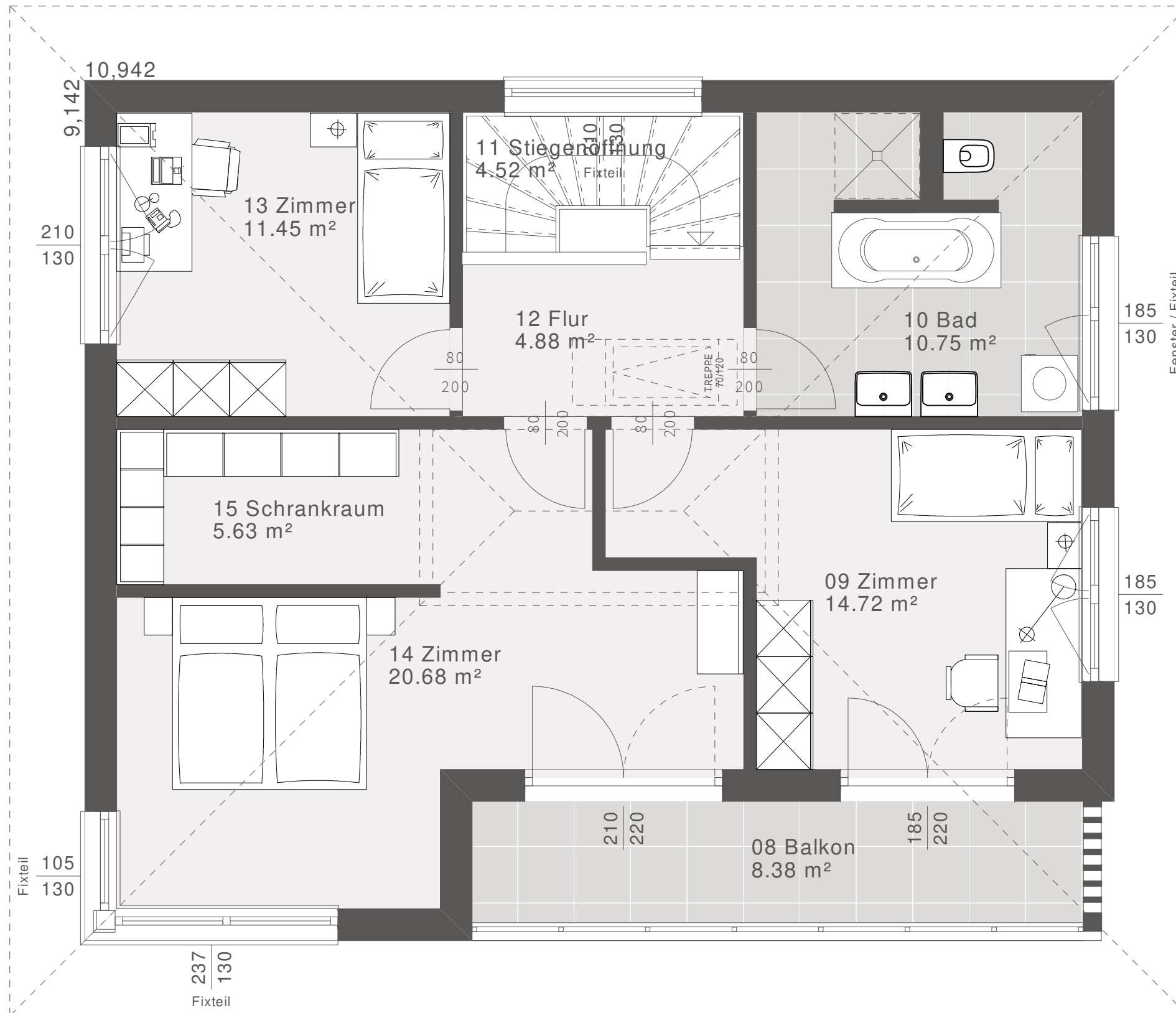


Dachform	
Walmdach	18°
Nettogrundrissfläche	
Erdgeschoss	72,25 m <sup>2</sup>
Obergeschoss	72,63 m <sup>2</sup>
Dachgeschoss	0 m <sup>2</sup>
Summe	144,88 m <sup>2</sup>
Luftraum	0 m <sup>2</sup>
Bebaute Fläche	100,03 m <sup>2</sup>

Erdgeschoss Maßstab 1:50 (DIN A3)



# ELK Design 144 - Musterhaus Haid



Dachform	
Walmdach	18°
Nettogrundrissfläche	
Erdgeschoss	72,25 m <sup>2</sup>
Obergeschoss	72,63 m <sup>2</sup>
Dachgeschoss	0 m <sup>2</sup>
Summe	144,88 m <sup>2</sup>
Luftraum	0 m <sup>2</sup>
Bebaute Fläche	100,03 m <sup>2</sup>

Obergeschoss Maßstab 1:50 (DIN A3)

