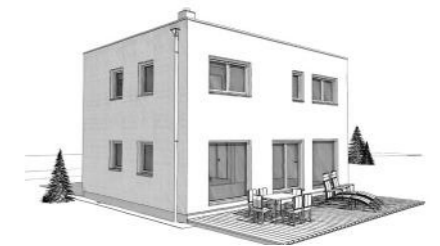
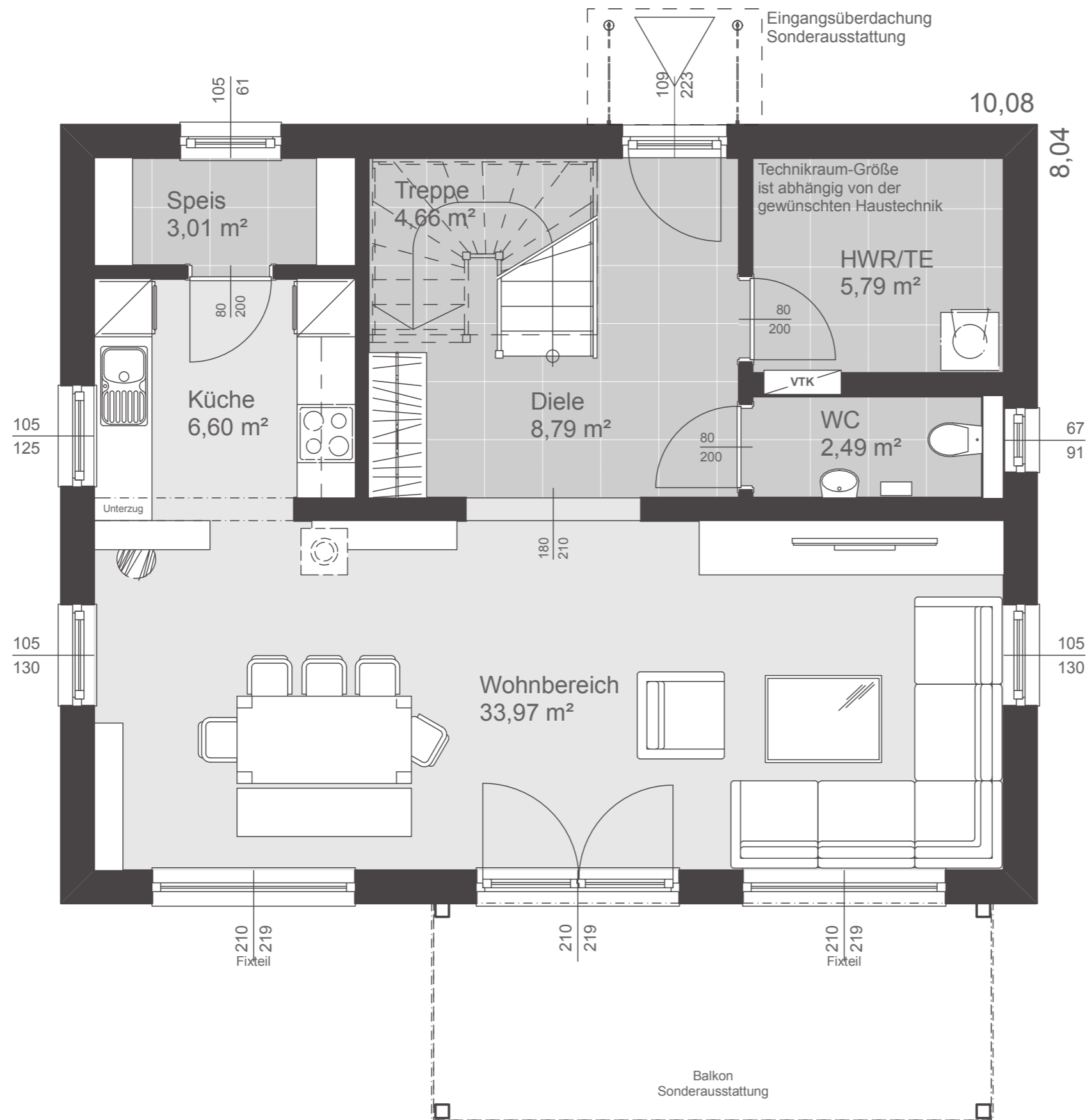


Dachformen

Satteldach	40° Kst. 1,00 m
Satteldach	25° Kst. 2,00 m
Walmdach	25°
Flachdach	3%
Pultdach	7°

Nettogrundfläche

Erdgeschoß	65,31 m ²
Obergeschoß	65,49 m ²
Summe	130,80 m²
Bebaute Fläche	81,01 m ²

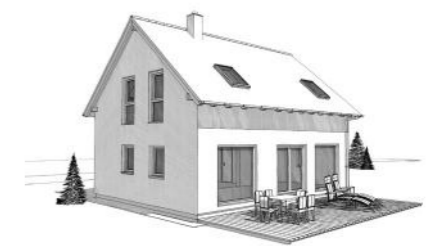
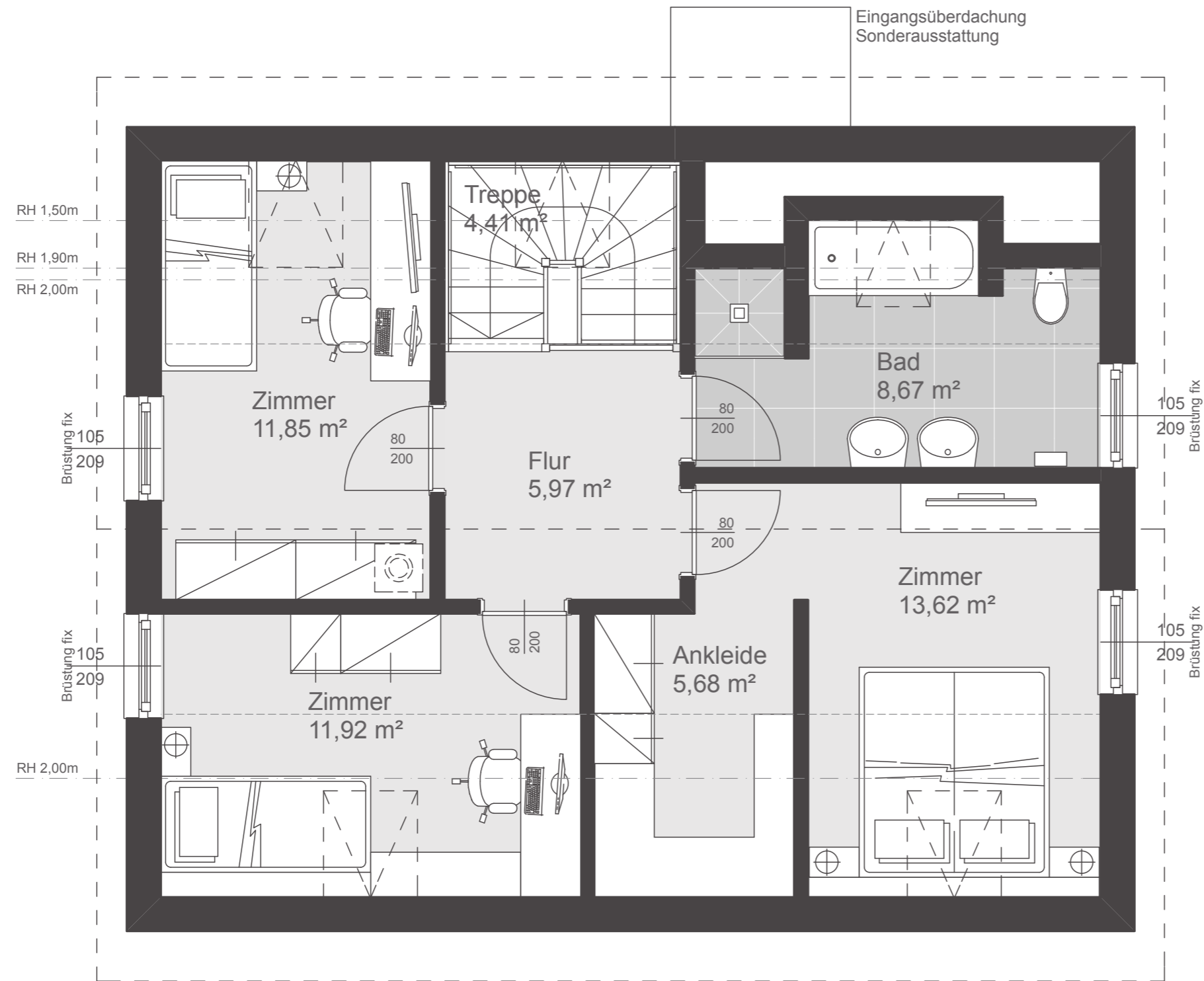


Dachformen

Satteldach	40° Kst. 1,00 m
Satteldach	25° Kst. 2,00 m
Walmdach	25°
Flachdach	3%
Pultdach	7°

Nettogrundfläche

Erdgeschoß	65,31 m ²
Obergeschoß	62,12 m ²
Summe	127,43 m²
Bebaute Fläche	81,01 m ²

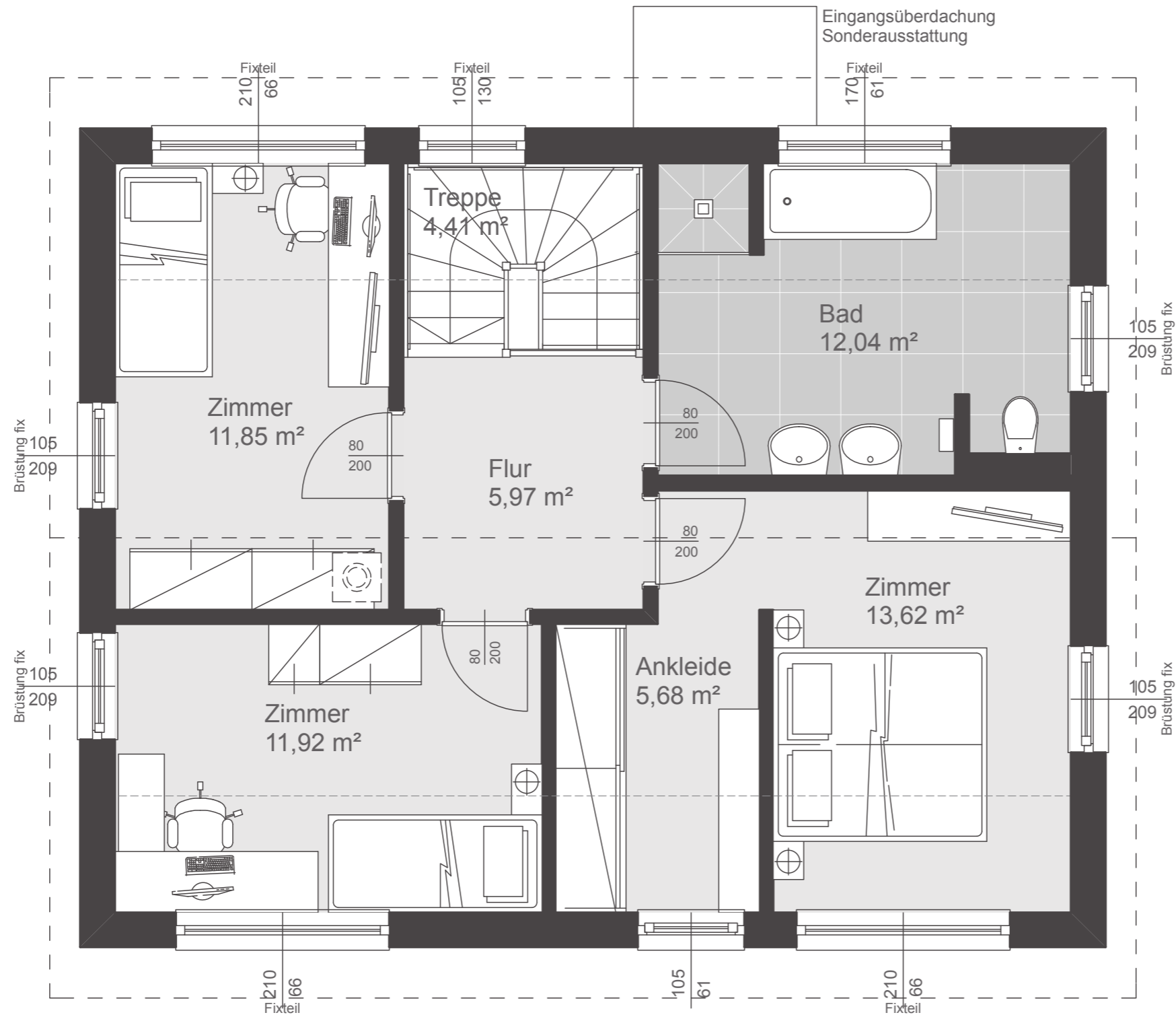


Dachform

Satteldach 40° Kst. 1,00 m

Nettogrundfläche

Erdgeschoß	65,31 m ²
Obergeschoß	62,12 m ²
Summe	127,43 m²
Bebaute Fläche	81,01 m ²

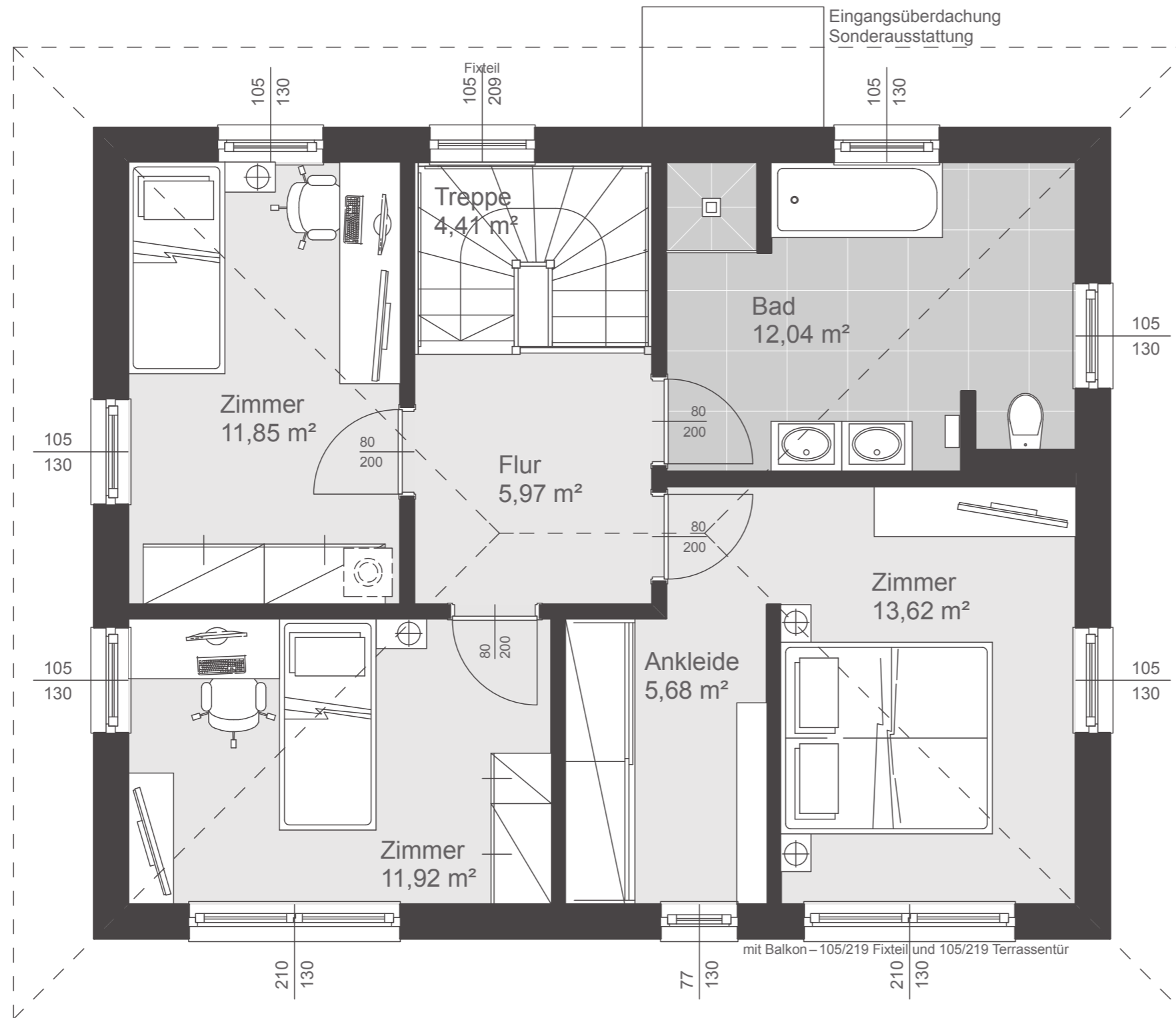


Dachform

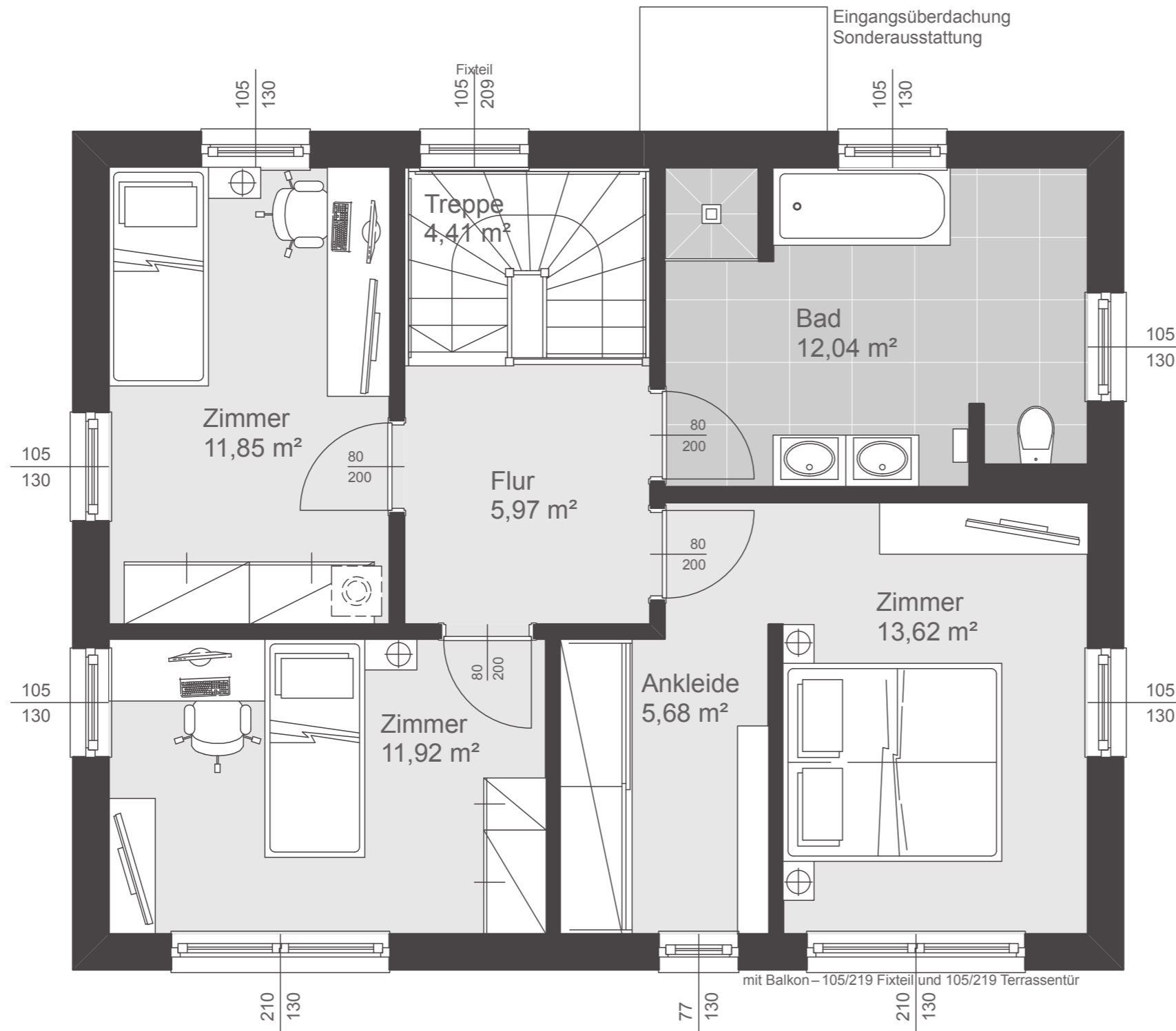
Satteldach 25° Kst. 2,00 m

Nettogrundfläche

Erdgeschoß	65,31 m ²
Obergeschoß	65,49 m ²
Summe	130,80 m²
Bebaute Fläche	81,01 m ²



Dachform	
Walmdach	25°
Nettogrundfläche	
Erdgeschoß	65,31 m ²
Obergeschoß	65,49 m ²
Summe	130,80 m²
Bebaute Fläche	81,01 m ²

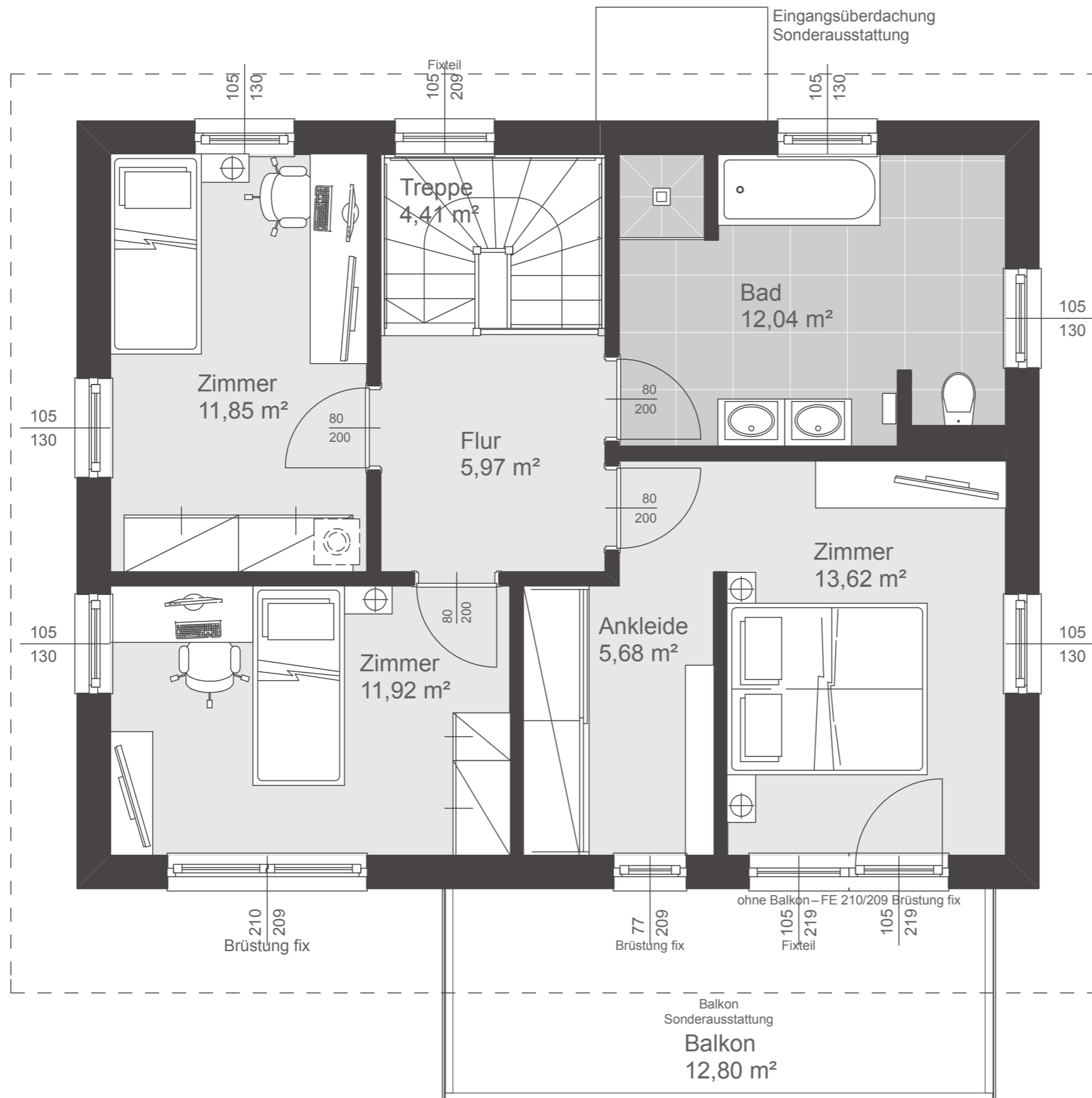


Dachform

Flachdach 3%

Nettogrundfläche

Erdgeschoß	65,31 m ²
Obergeschoß	65,49 m ²
Summe	130,80 m²
Bebaute Fläche	81,01 m ²



Dachform

Pultdach 7°

Nettogrundfläche

Erdgeschoß	65,31 m ²
Obergeschoß	65,49 m ²
Summe	130,80 m²
Bebaute Fläche	81,01 m ²