

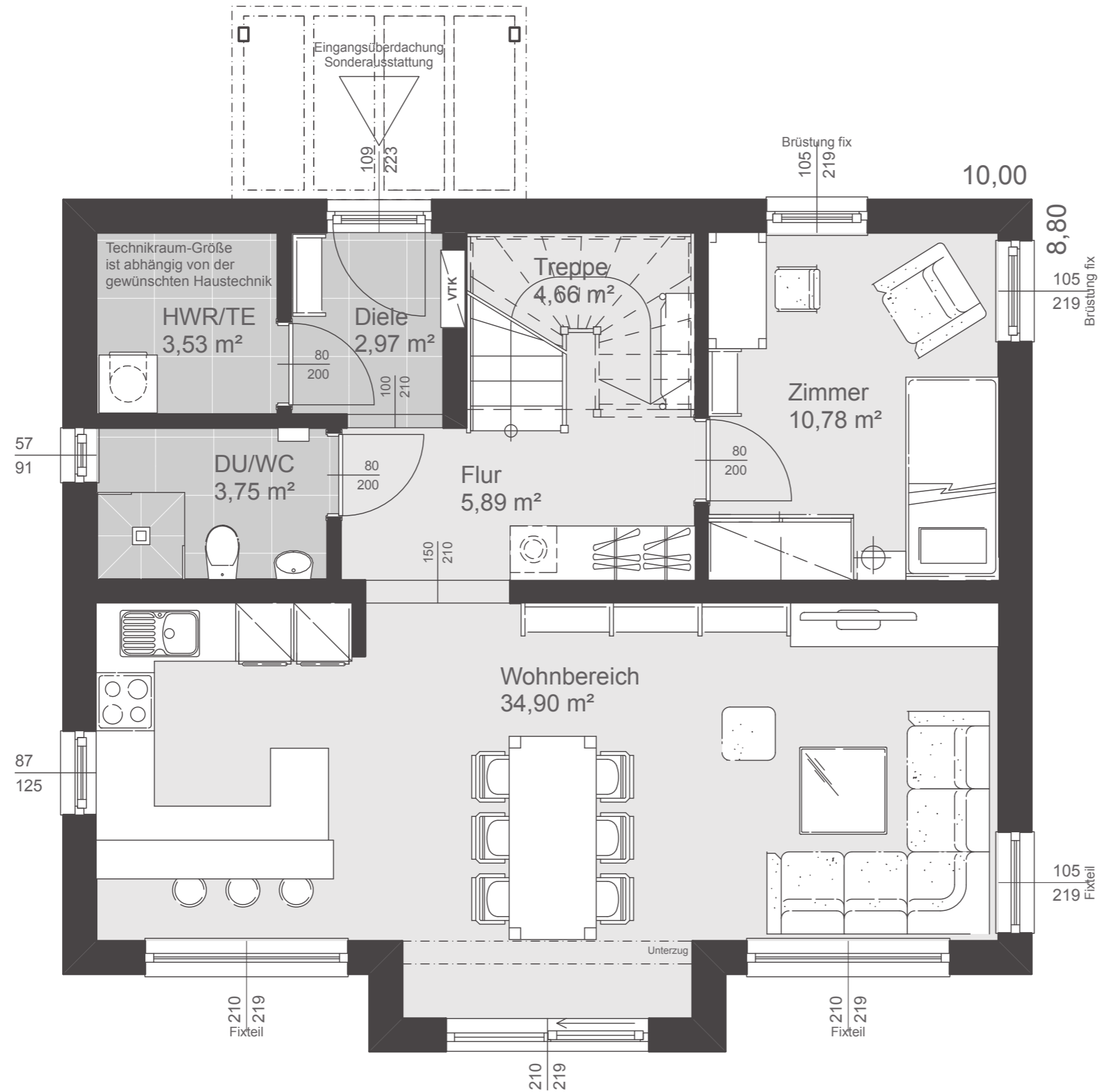


Dachformen

Satteldach	40° Kst. 1,40 m
Satteldach	25° Kst. 2,00 m
Walmdach	25°
Pultdach	7°

Nettogrundfläche

Erdgeschoß	66,48 m ²
Obergeschoß	66,98 m ²
Summe	133,46 m²
Bebaute Fläche	82,94 m ²

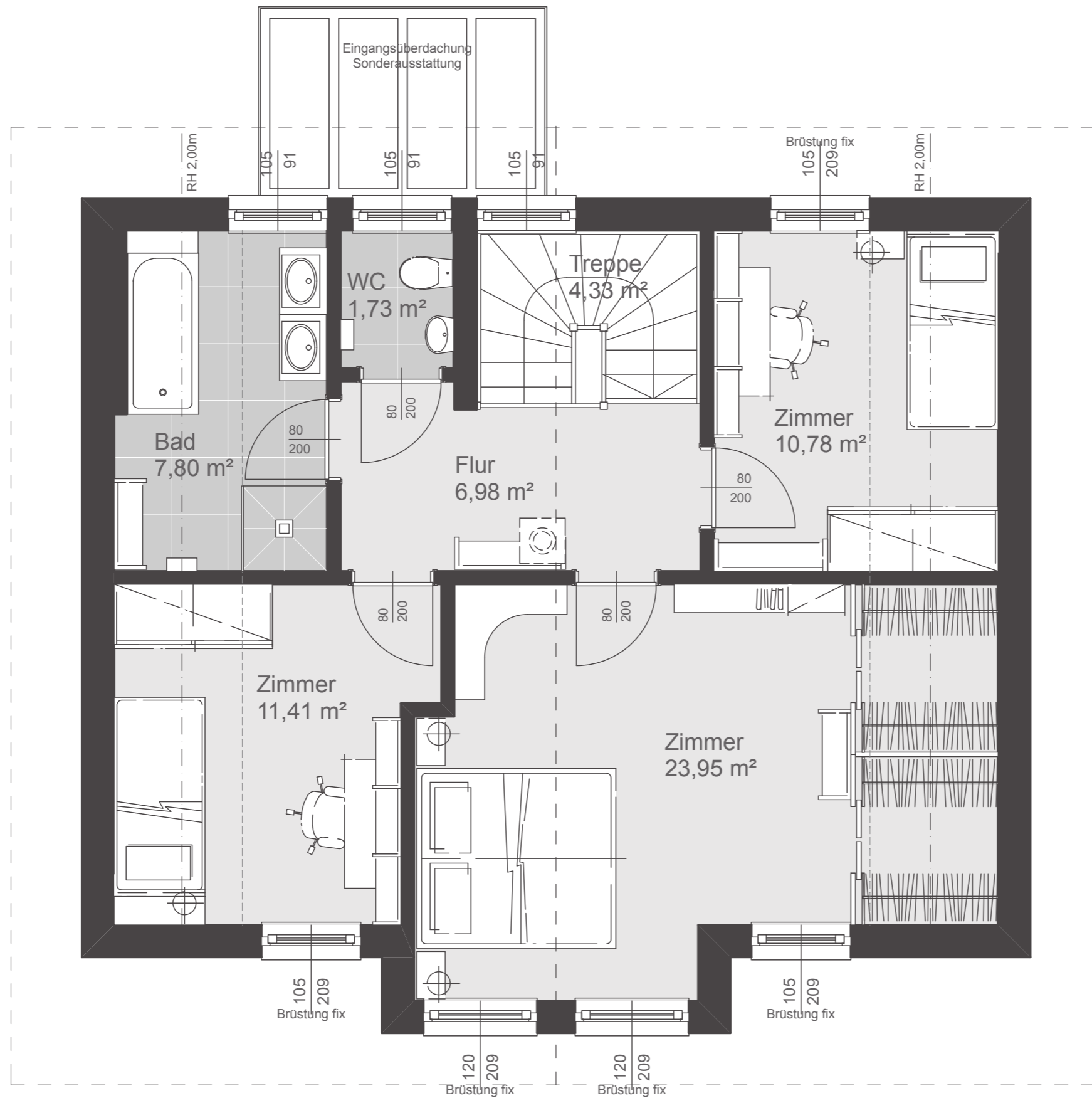


Dachformen

Satteldach	40° Kst. 1,40 m
Satteldach	25° Kst. 2,00 m
Walmdach	25°
Pulldach	7°

Nettogrundfläche

Erdgeschoß	66,48 m ²
Obergeschoß	66,98 m ²
Summe	133,46 m²
Bebaute Fläche	82,94 m ²



Dachform

Satteldach 40° Kst. 1,40 m

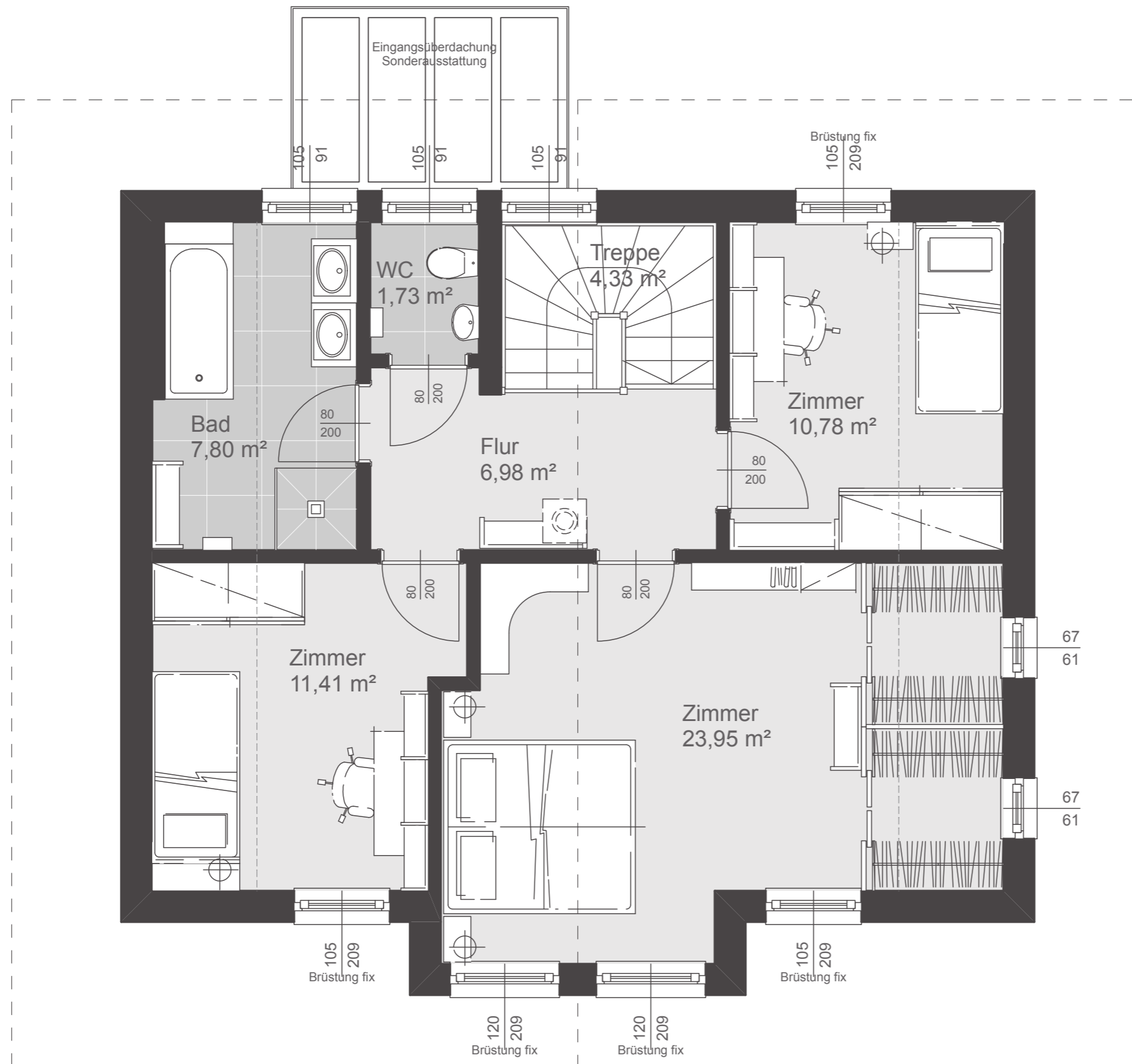
Nettogrundfläche

Erdgeschoß 66,48 m²

Obergeschoß 66,98 m²

Summe 133,46 m²

Bebaute Fläche 82,94 m²



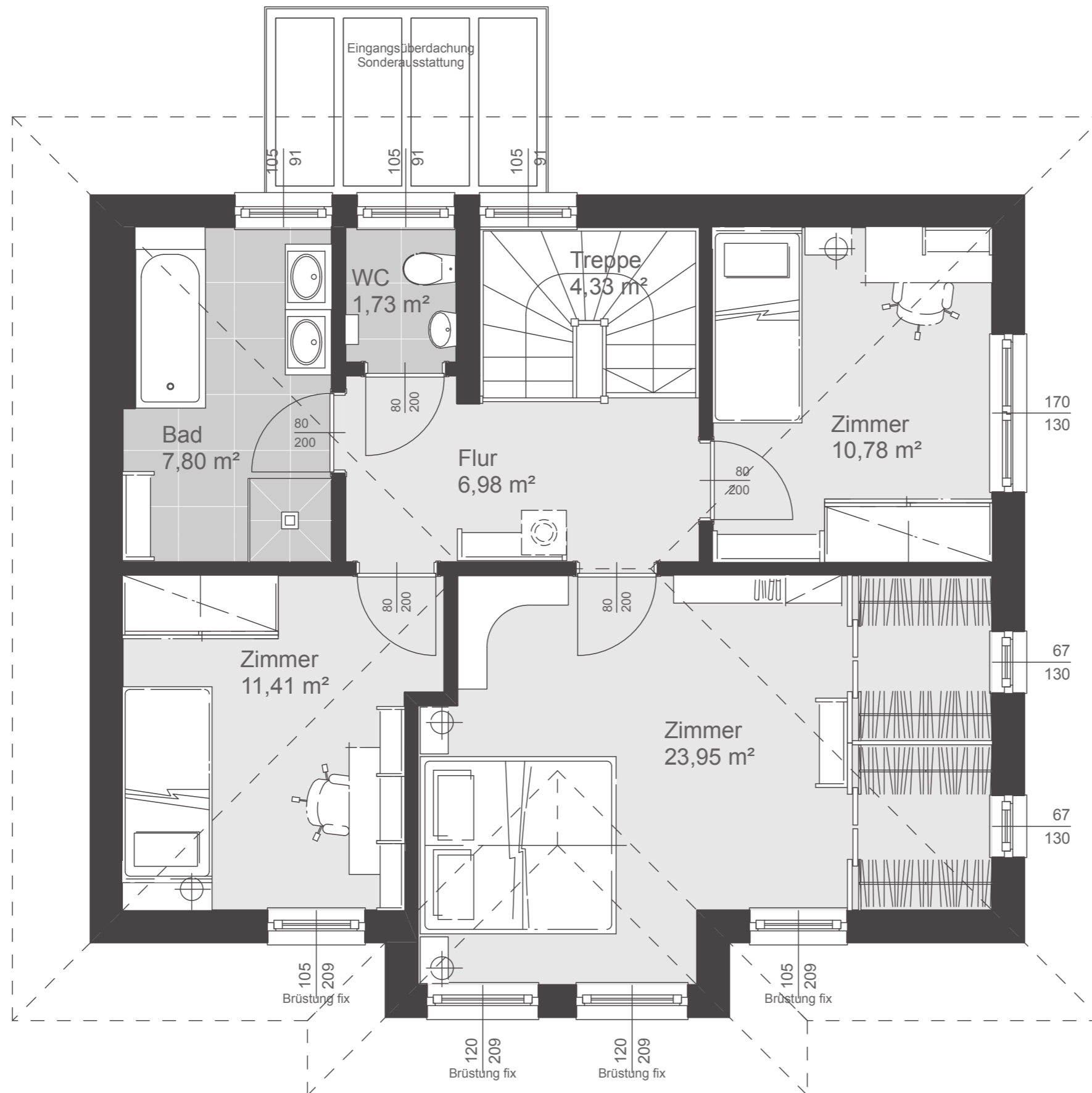
Dachform

Satteldach 25° Kst. 2,00 m

Nettogrundfläche

Erdgeschoß 66,48 m²
 Obergeschoß 66,98 m²

Summe 133,46 m²
 Bebaute Fläche 82,94 m²

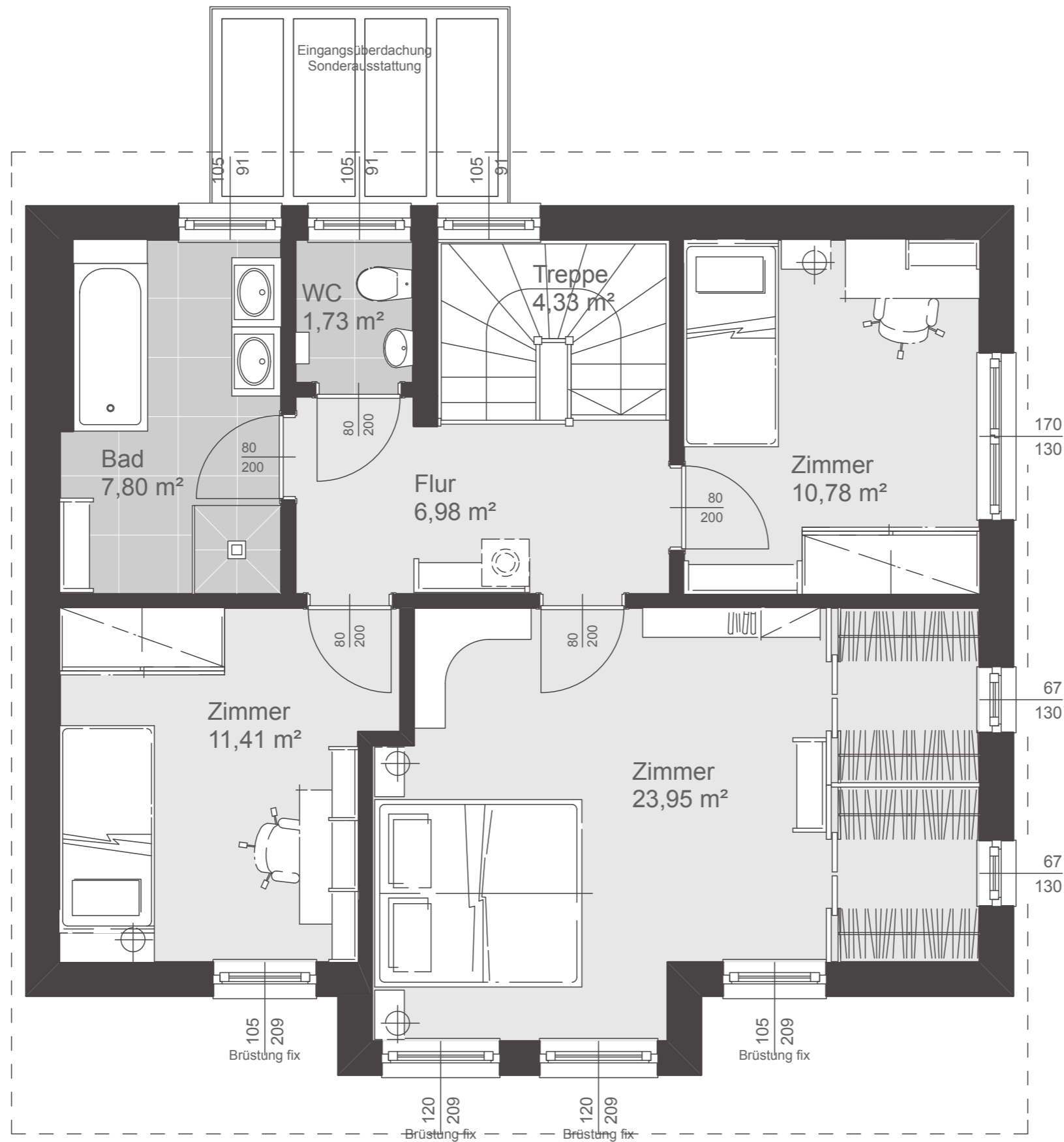


Dachform

Walmdach 25°

Nettogrundfläche

Erdgeschoß	66,48 m ²
Obergeschoß	66,98 m ²
Summe	133,46 m²
Bebaute Fläche	82,94 m ²



Dachform

Pultdach 7°

Nettogrundfläche

Erdgeschoß 66,48 m²

Obergeschoß 66,98 m²

Summe 133,46 m²

Bebaute Fläche 82,94 m²