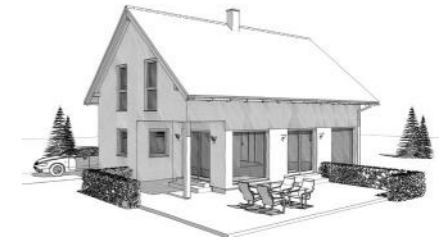
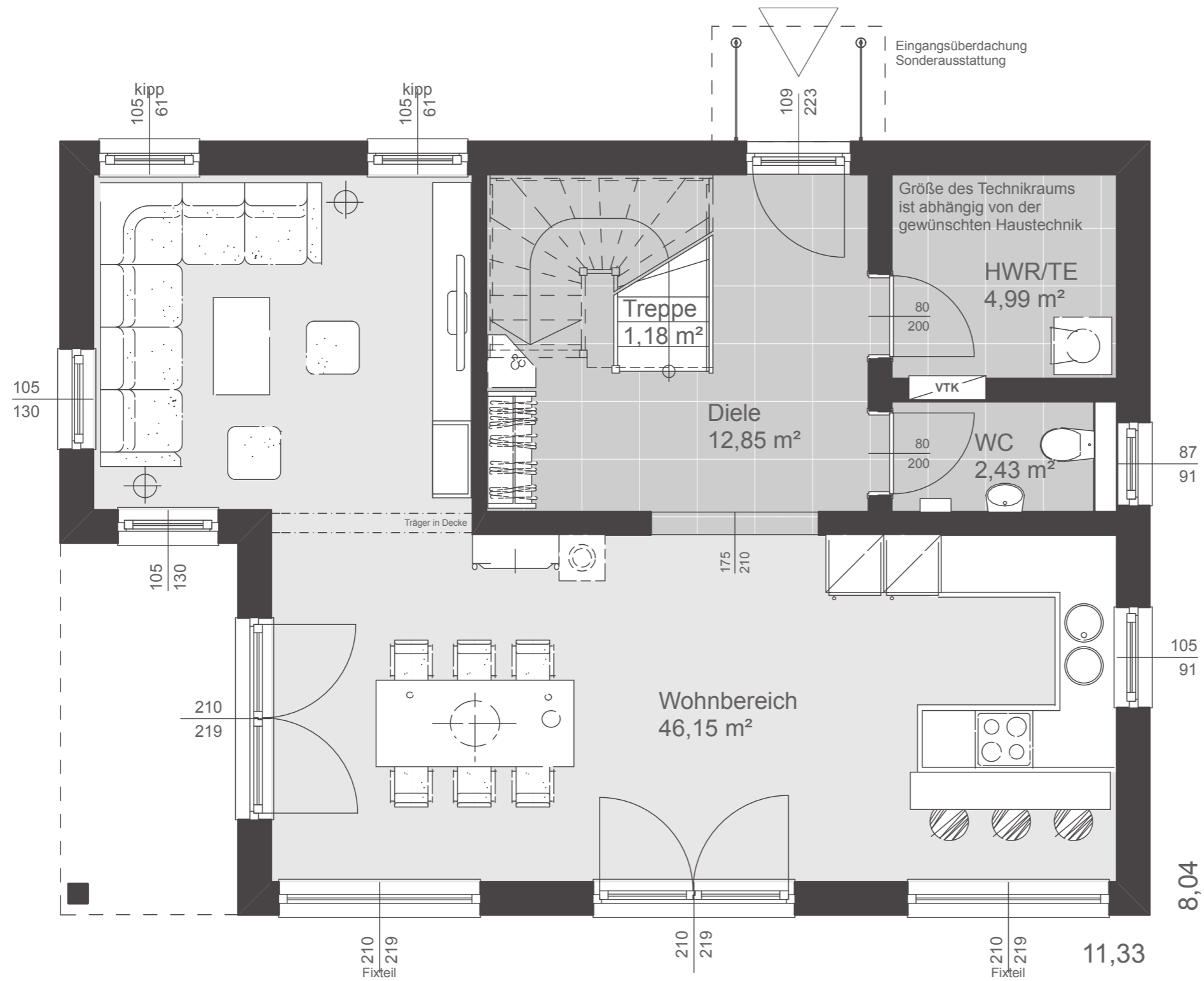


Dachformen

Satteldach	40° Kst. 1,00 m
Satteldach	25° Kst. 2,00 m
Walmdach	25°
Flachdach	3%
Pultdach	7°

Nettogrundfläche

Erdgeschoß	67,59 m ²
Obergeschoß	73,85 m ²
Summe	141,44 m²
Bebaute Fläche	91,06 m ²

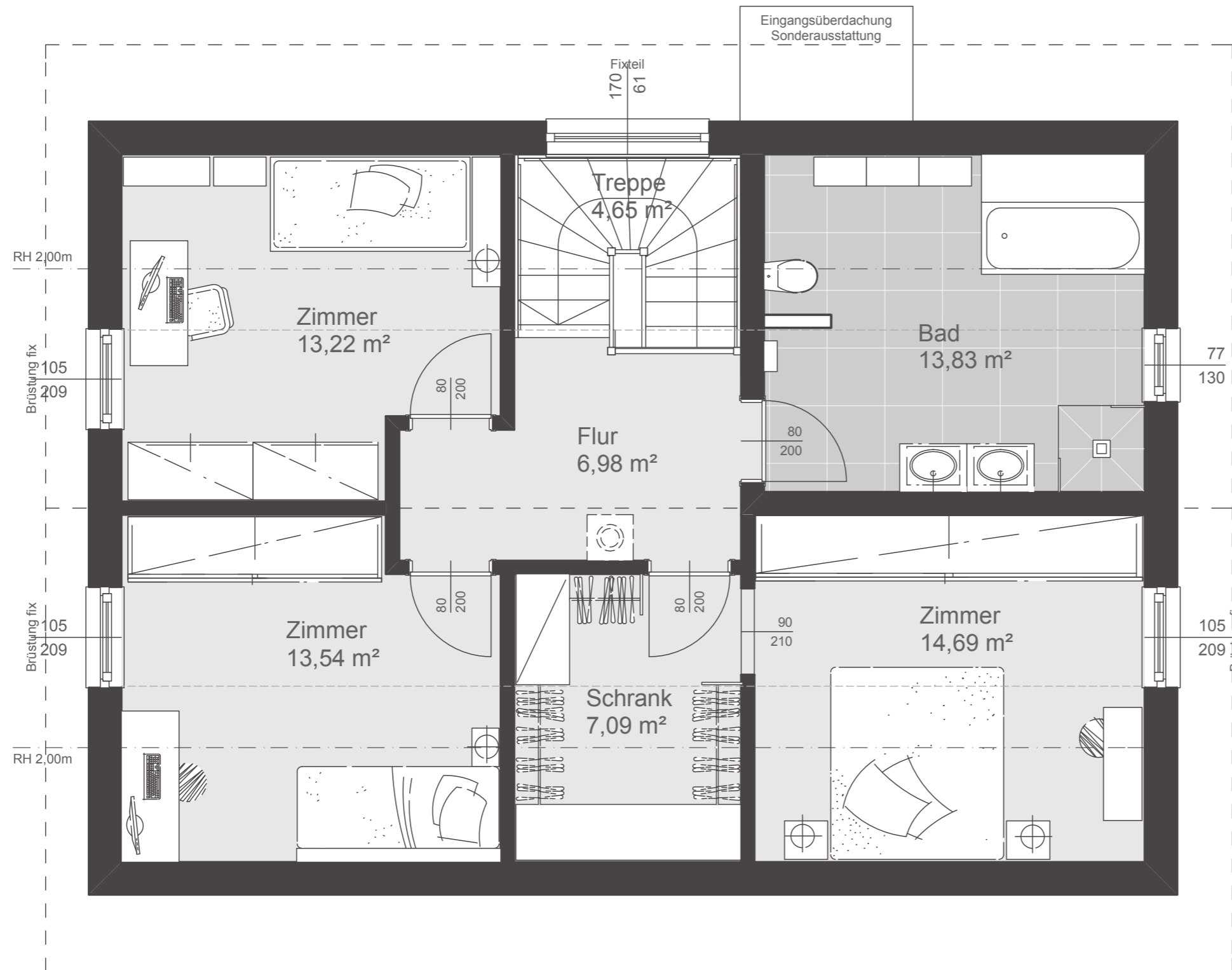


Dachformen

Satteldach	40° Kst. 1,00 m
Satteldach	25° Kst. 2,00 m
Walmdach	25°
Flachdach	3%
Pulldach	7°

Nettogrundfläche

Erdgeschoß	67,59 m²
Obergeschoß	73,85 m²
Summe	141,44 m²
Bebaute Fläche	91,06 m²



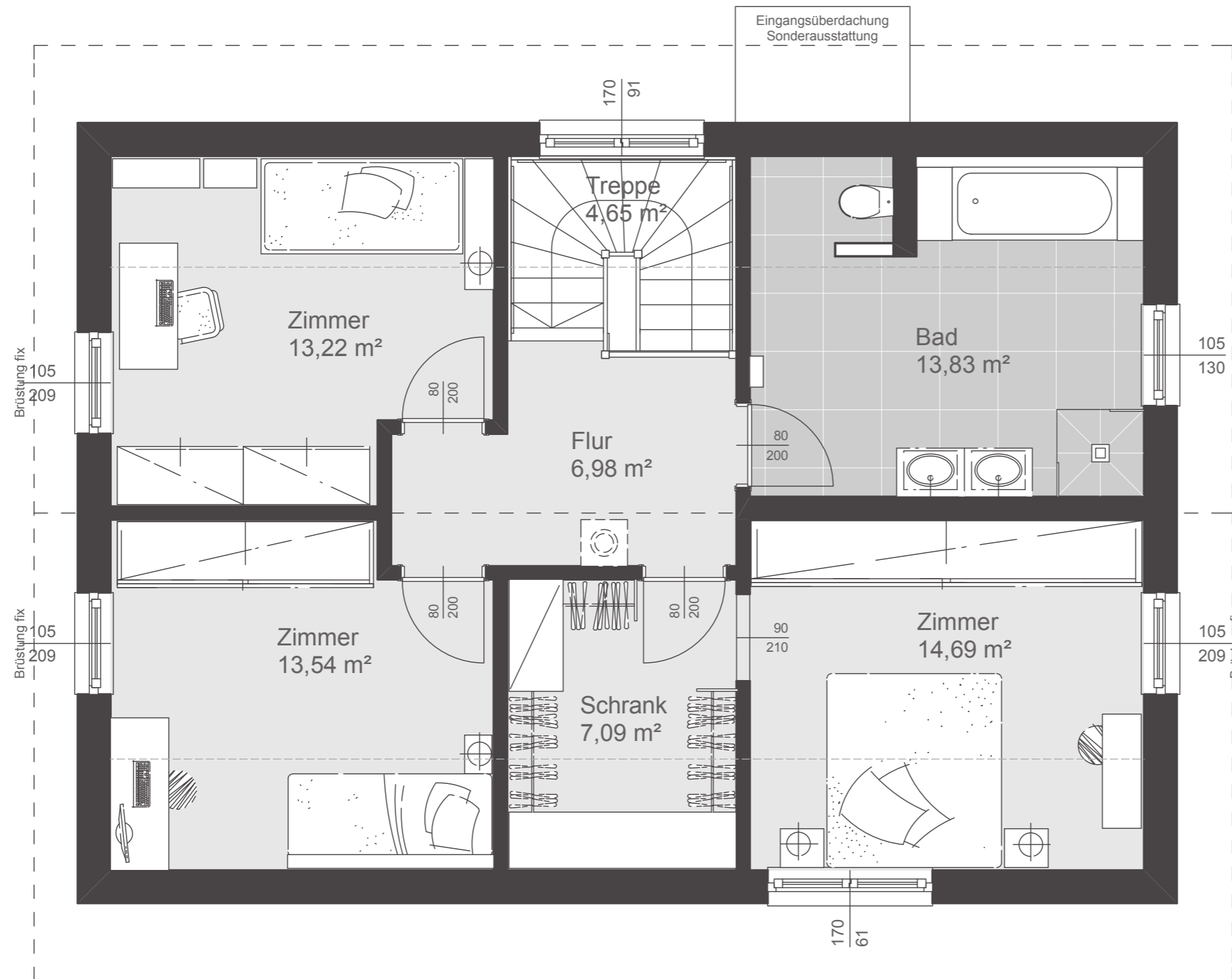
Dachform

Satteldach 38° Kst. 1,40 m

Nettogrundfläche

Erdgeschoß 67,59 m²
 Obergeschoß 74,00 m²

Summe 141,59 m²
 Bebaute Fläche 91,06 m²



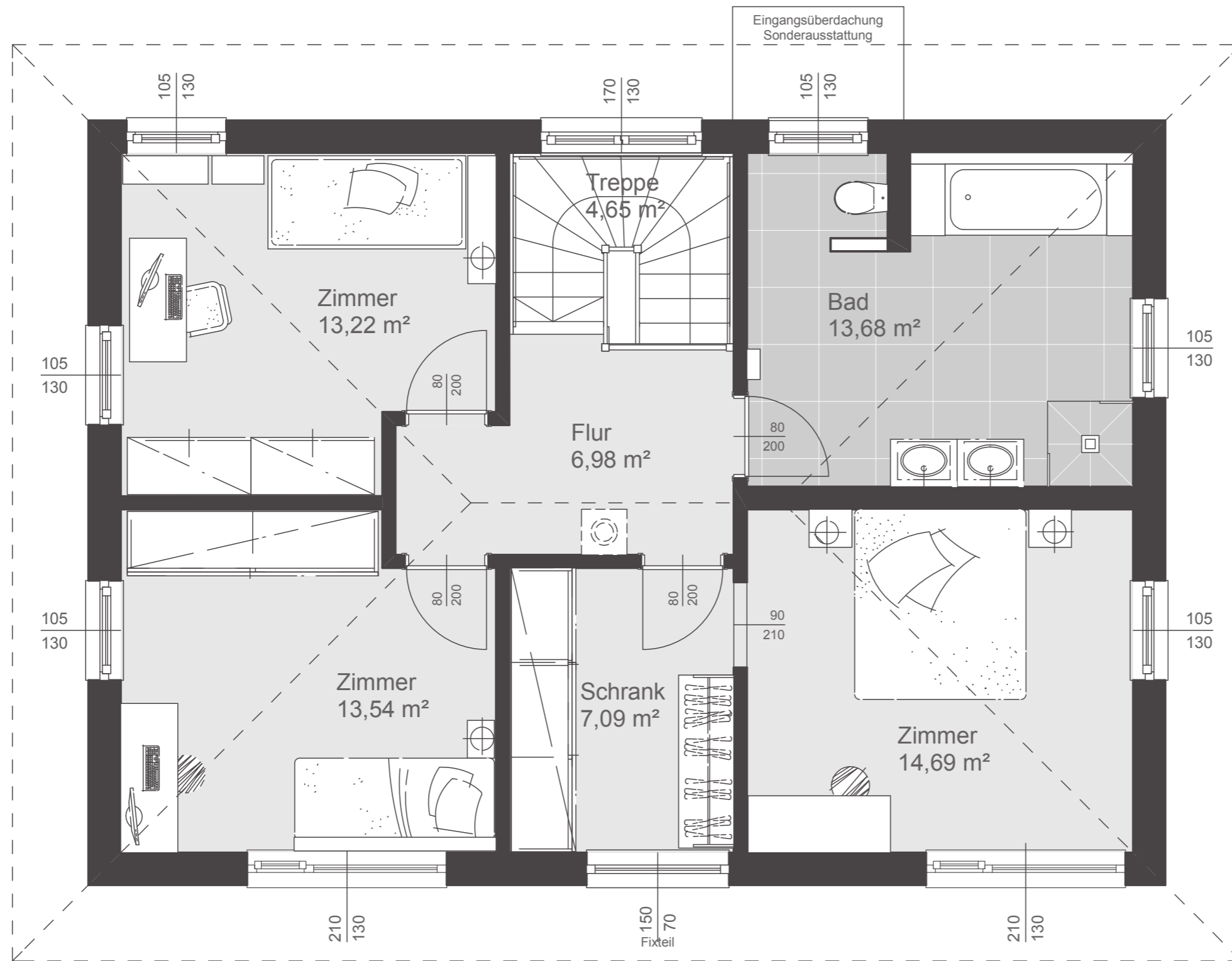
Dachform

Satteldach 25° Kst. 1,80 m

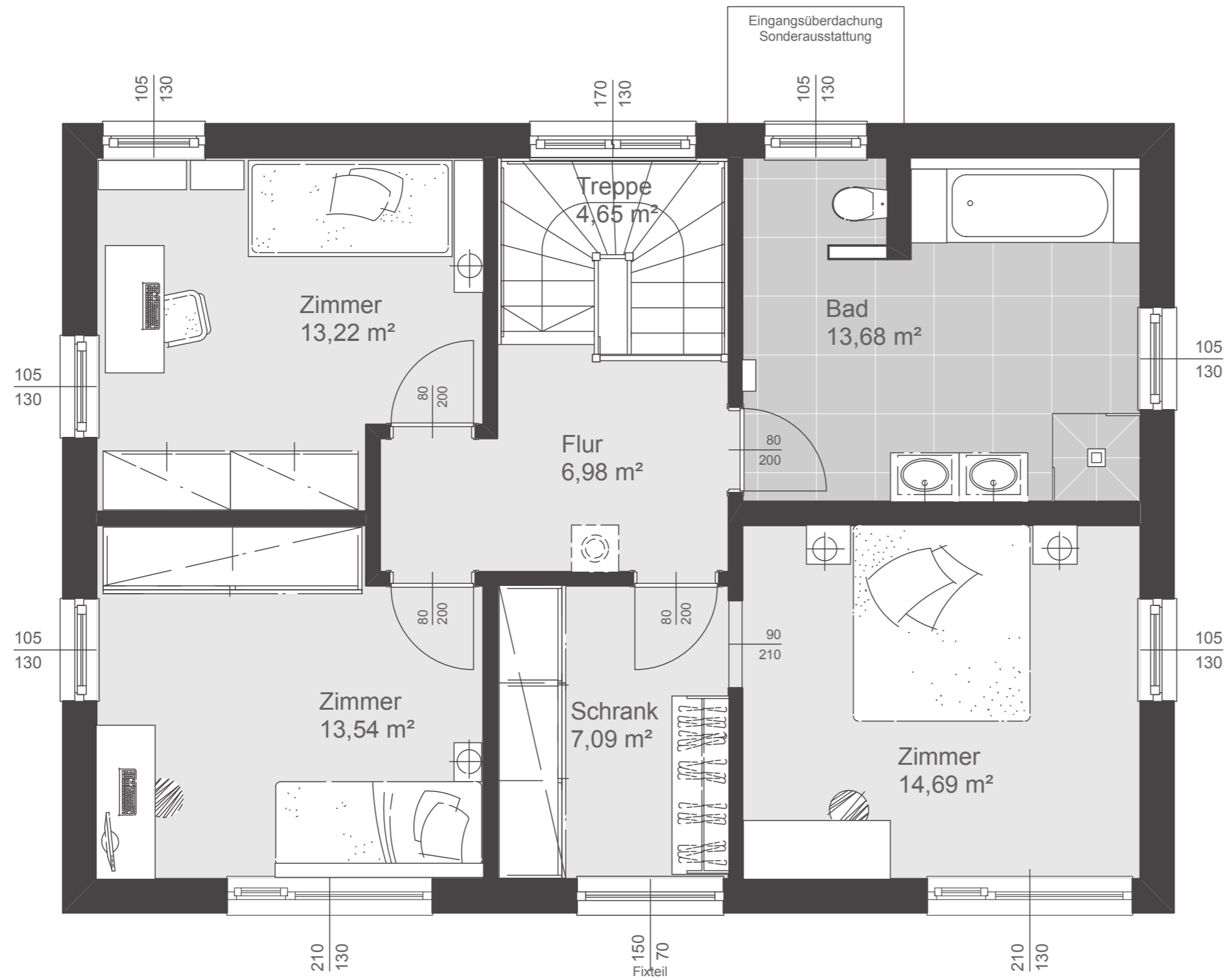
Nettogrundfläche

Erdgeschoß 67,59 m²
 Obergeschoß 73,85 m²

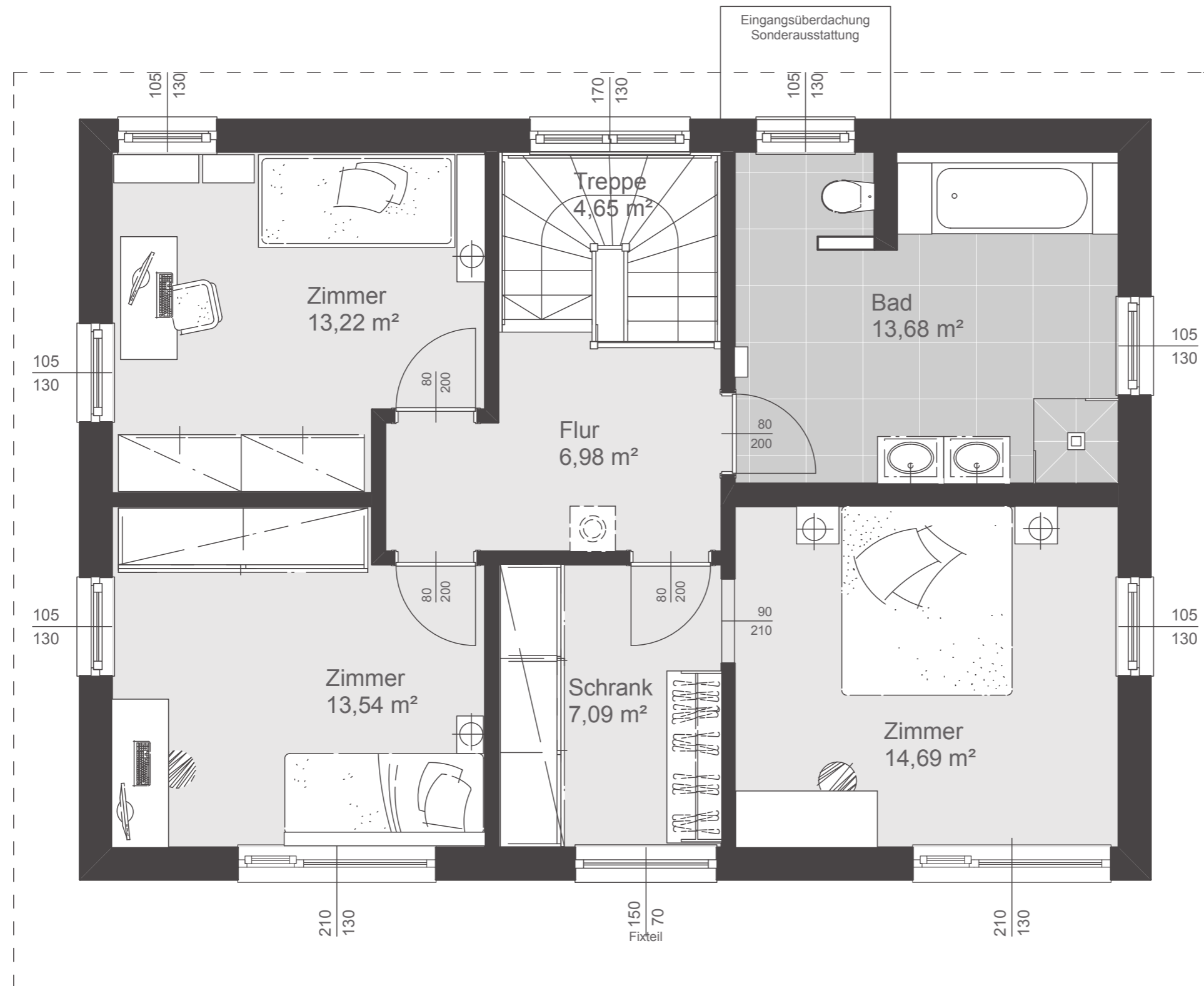
Summe 141,44 m²
 Bebaute Fläche 91,06 m²



Dachform	
Walmdach	25°
Nettogrundfläche	
Erdgeschoß	67,59 m ²
Obergeschoß	73,85 m ²
Summe	141,44 m²
Bebaute Fläche	91,06 m ²



Dachform	
Flachdach	3%
Nettogrundfläche	
Erdgeschoß	67,59 m ²
Obergeschoß	73,85 m ²
Summe	141,44 m²
Bebaute Fläche	91,06 m ²



Dachform	
Pultdach	7°
Nettogrundfläche	
Erdgeschoß	67,59 m ²
Obergeschoß	73,85 m ²
Summe	141,44 m²
Bebaute Fläche	91,06 m ²