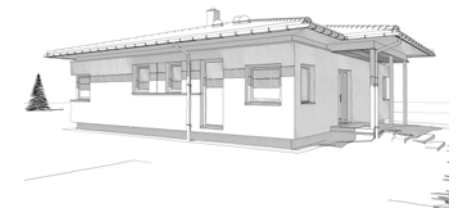
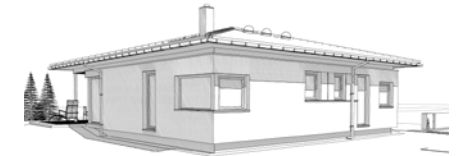
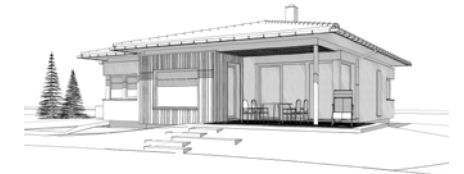
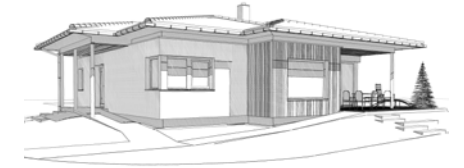
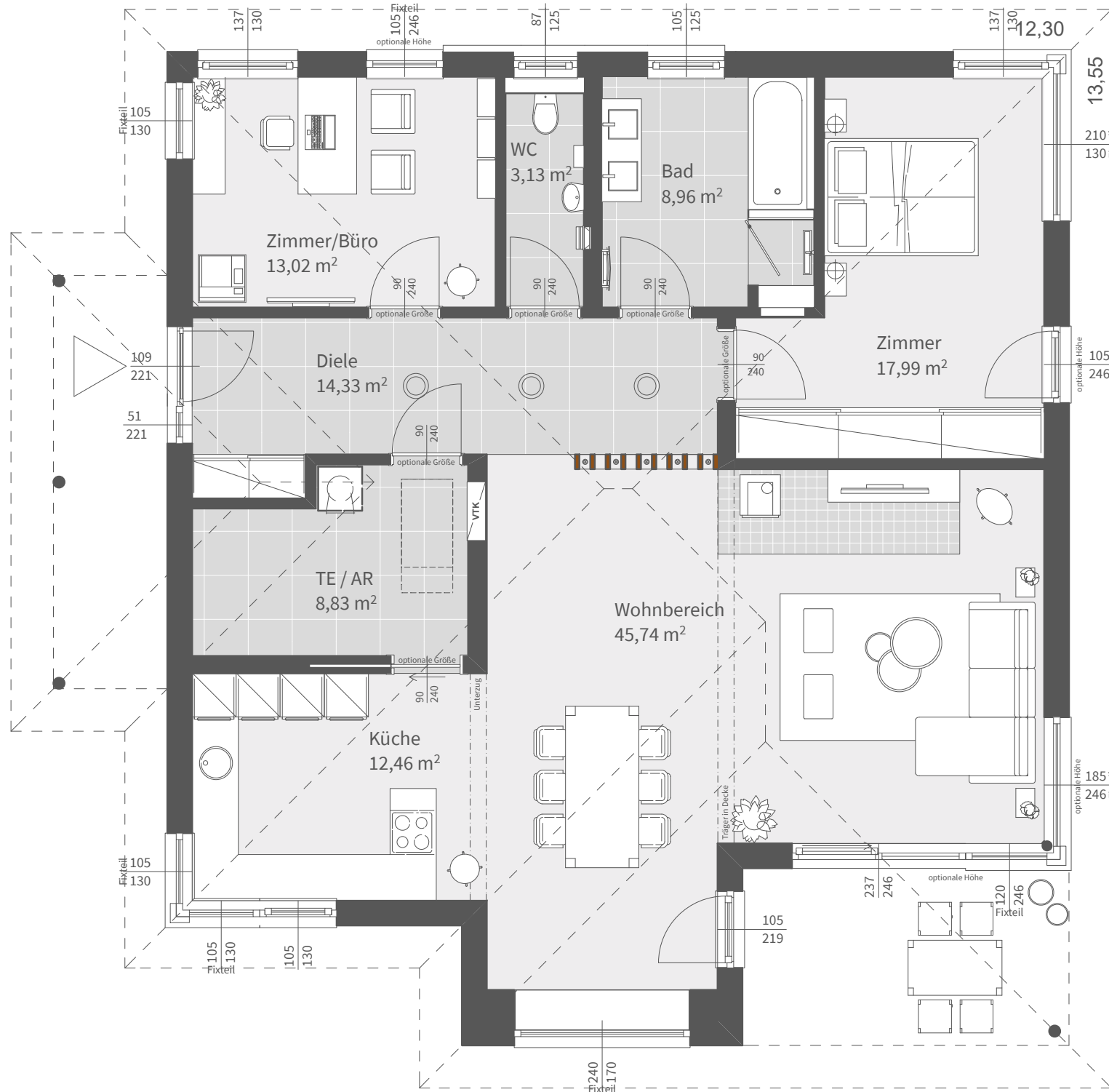


Dachform	
Walmdach	15°, Vollgeschoß

Nettogrundrissfläche	
Erdgeschoß	124,46 m ²
Summe	124,46 m ²

Bebaute Fläche	149,31 m ²
----------------	-----------------------



Dachform	
Walmdach	15°, Vollgeschoß
Gebäudehöhe	3,67 m
Traufenhöhe	3,36 m
Firsthöhe	5,28 m
<small>ab Oberkante Fundament - 18,5 cm FB-Aufbau, RH 2,80m</small>	
Nettogrundrissfläche	
Erdgeschoß	124,46 m ²
Summe	124,46 m ²

Bebaute Fläche 149,31 m²